



Datasheet for ABIN1535598
anti-OPN3 antibody (AA 161-210)



[Go to Product page](#)

2 Images

Overview

Quantity:	100 µg
Target:	OPN3
Binding Specificity:	AA 161-210
Reactivity:	Human, Mouse
Host:	Rabbit
Clonality:	Polyclonal
Conjugate:	This OPN3 antibody is un-conjugated
Application:	Western Blotting (WB), ELISA, Immunofluorescence (IF)

Product Details

Immunogen:	The antiserum was produced against synthesized peptide derived from human Encephalopsin.
Isotype:	IgG
Specificity:	Encephalopsin Antibody detects endogenous levels of total Encephalopsin protein.
Purification:	The antibody was purified from rabbit antiserum by affinity-chromatography using immunogen.
Purity:	> 95 %

Target Details

Target:	OPN3
Alternative Name:	Encephalopsin (OPN3 Products)
Background:	Synonyms: Opsin-3, Encephalopsin, Panopsin, OPN3, ECPN

Target Details

NCBI Gene Symbol: OPN3

Molecular Weight: 44 kDa

Gene ID: 23596

OMIM: 606695

UniProt: [Q9H1Y3](#)

Application Details

Application Notes: WB: 1:500~1:1000 IF: 1:100~1:500 ELISA: 1:5000

Comment: Unigene-Number: Hs.409081, Hs.724579 (NCBI Gene Symbol: OPN3)

Restrictions: For Research Use only

Handling

Format: Liquid

Concentration: 1 mg/mL

Buffer: phosphate buffered saline (without Mg²⁺ and Ca²⁺), pH 7.4, 150 mM NaCl, 0.02 % sodium azide and 50 % glycerol.

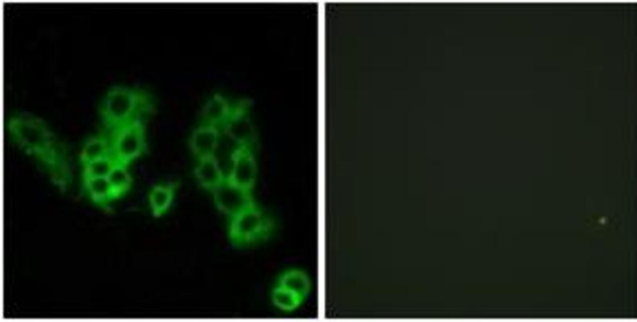
Preservative: Sodium azide

Precaution of Use: This product contains sodium azide: a POISONOUS AND HAZARDOUS SUBSTANCE which should be handled by trained staff only.

Storage: -20 °C

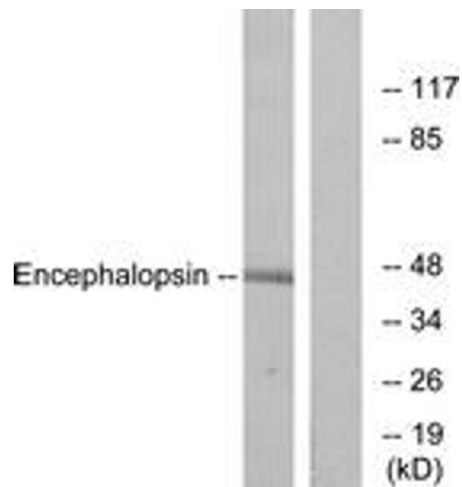
Storage Comment: Stable at -20°C for at least 1 year.

Expiry Date: 12 months



Immunofluorescence

Image 1. Immunofluorescence analysis of MCF7 cells, using Encephalopsin Antibody. The picture on the right is treated with the synthesized peptide.



Western Blotting

Image 2. Western blot analysis of extracts from mouse brain cells, using Encephalopsin Antibody. The lane on the right is treated with the synthesized peptide.