

Datasheet for ABIN1535601
anti-PTGER3 antibody (AA 1-50)

3 Images

[Go to Product page](#)

Overview

Quantity:	100 µg
Target:	PTGER3
Binding Specificity:	AA 1-50
Reactivity:	Human
Host:	Rabbit
Clonality:	Polyclonal
Conjugate:	This PTGER3 antibody is un-conjugated
Application:	Western Blotting (WB), ELISA, Immunohistochemistry (IHC), Immunofluorescence (IF)

Product Details

Immunogen:	The antiserum was produced against synthesized peptide derived from human PE2R3.
Isotype:	IgG
Specificity:	PE2R3 Antibody detects endogenous levels of total PE2R3 protein.
Purification:	The antibody was purified from rabbit antiserum by affinity-chromatography using immunogen.
Purity:	> 95 %

Target Details

Target:	PTGER3
Abstract:	PTGER3 Products
Background:	Synonyms: Prostaglandin E2 receptor EP3 subtype, Prostanoid EP3 receptor, PGE receptor, EP3

Target Details

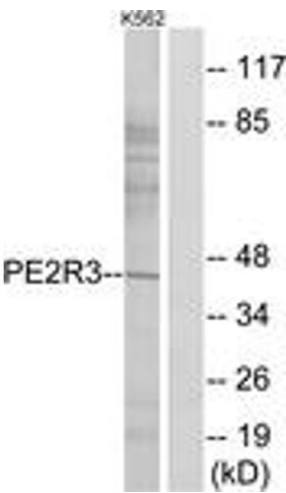
	subtype, PGE2-R, PTGER3 NCBI Gene Symbol: PTGER3
Molecular Weight:	43 kDa
Gene ID:	5733
OMIM:	176806
UniProt:	P43115

Application Details

Application Notes:	WB: 1:500~1:1000 IHC: 1:50~1:100 IF: 1:100~1:500 ELISA: 1:5000
Comment:	Unigene-Number: Hs.445000 (NCBI Gene Symbol: PTGER3)
Restrictions:	For Research Use only

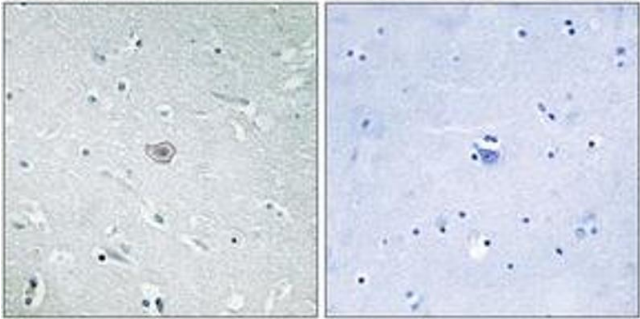
Handling

Format:	Liquid
Concentration:	1 mg/mL
Buffer:	phosphate buffered saline (without Mg2+ and Ca2+), pH 7.4, 150 mM NaCl, 0.02 % sodium azide and 50 % glycerol.
Preservative:	Sodium azide
Precaution of Use:	This product contains sodium azide: a POISONOUS AND HAZARDOUS SUBSTANCE which should be handled by trained staff only.
Storage:	-20 °C
Storage Comment:	Stable at -20°C for at least 1 year.
Expiry Date:	12 months



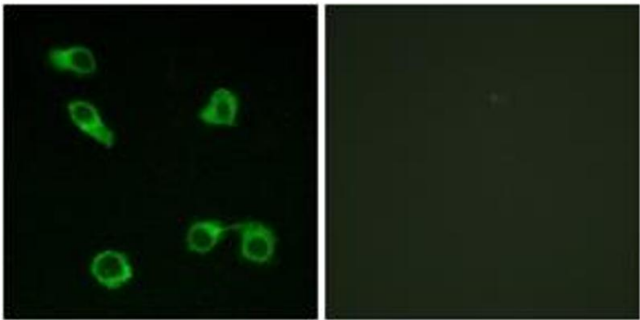
Western Blotting

Image 1. Western blot analysis of extracts from K562 cells, using PE2R3 Antibody. The lane on the right is treated with the synthesized peptide.



Immunohistochemistry

Image 2. Immunohistochemistry analysis of paraffin-embedded human brain tissue, using PE2R3 Antibody. The picture on the right is treated with the synthesized peptide.



Immunofluorescence

Image 3. Immunofluorescence analysis of COS7 cells, using PE2R3 Antibody. The picture on the right is treated with the synthesized peptide.