



[Go to Product page](#)

Datasheet for ABIN1535603
anti-ELTD1 antibody (AA 251-300)

1 Image

Overview

Quantity:	100 µL
Target:	ELTD1
Binding Specificity:	AA 251-300
Reactivity:	Human
Host:	Rabbit
Clonality:	Polyclonal
Conjugate:	This ELTD1 antibody is un-conjugated
Application:	ELISA, Immunofluorescence (IF)

Product Details

Immunogen:	The antiserum was produced against synthesized peptide derived from human ELTD1.
Isotype:	IgG
Specificity:	ELTD1 Antibody detects endogenous levels of total ELTD1 protein.
Purification:	The antibody was purified from rabbit antiserum by affinity-chromatography using immunogen.
Purity:	> 95 %

Target Details

Target:	ELTD1
Alternative Name:	ELTD1 (ELTD1 Products)
Background:	Synonyms: EGF, latrophilin and seven transmembrane domain-containing protein 1, EGF-TM7-

Target Details

latrophilin-related protein, ETL protein, ELTD1, ETL,
NCBI Gene Symbol: ELTD1

Molecular Weight: 77 kDa

Gene ID: 64123

UniProt: [Q9HBW9](#)

Application Details

Application Notes: IF: 1:100~1:500 ELISA: 1:20000

Comment: Unigene-Number: Hs.132314 (NCBI Gene Symbol: ELTD1)

Restrictions: For Research Use only

Handling

Format: Liquid

Concentration: 1 mg/mL

Buffer: phosphate buffered saline (without Mg²⁺ and Ca²⁺), pH 7.4, 150 mM NaCl, 0.02 % sodium azide and 50 % glycerol.

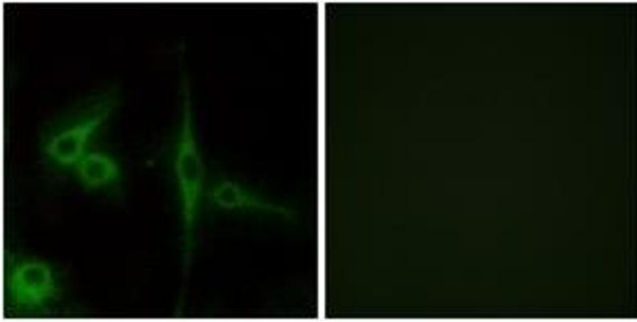
Preservative: Sodium azide

Precaution of Use: This product contains sodium azide: a POISONOUS AND HAZARDOUS SUBSTANCE which should be handled by trained staff only.

Storage: -20 °C

Storage Comment: Stable at -20°C for at least 1 year.

Expiry Date: 12 months



Immunofluorescence

Image 1. Immunofluorescence analysis of LOVO cells, using ELTD1 Antibody. The picture on the right is treated with the synthesized peptide.