



[Go to Product page](#)

Datasheet for ABIN1535623

## anti-G Protein-Coupled Receptor 115 antibody (AA 641-690)

### 2 Images

#### Overview

Quantity:	100 µL
Target:	G Protein-Coupled Receptor 115 (GPR115)
Binding Specificity:	AA 641-690
Reactivity:	Human, Mouse
Host:	Rabbit
Clonality:	Polyclonal
Conjugate:	This G Protein-Coupled Receptor 115 antibody is un-conjugated
Application:	Western Blotting (WB), ELISA, Immunofluorescence (IF)

#### Product Details

Immunogen:	The antiserum was produced against synthesized peptide derived from human GPR115.
Isotype:	IgG
Specificity:	GPR115 Antibody detects endogenous levels of total GPR115 protein.
Purification:	The antibody was purified from rabbit antiserum by affinity-chromatography using immunogen.
Purity:	> 95 %

#### Target Details

Target:	G Protein-Coupled Receptor 115 (GPR115)
Alternative Name:	GPR115 ( <a href="#">GPR115 Products</a> )
Background:	Synonyms: Probable G-protein coupled receptor 115, G-protein coupled receptor PGR18,

## Target Details

---

GPR115, PGR18,  
NCBI Gene Symbol: GPR115

Molecular Weight: 77 kDa

Gene ID: 221393

UniProt: [Q8IZF3](#)

## Application Details

---

Application Notes: WB: 1:500~1:1000 IF: 1:100~1:500 ELISA: 1:10000

Comment: Unigene-Number: Hs.150131 (NCBI Gene Symbol: GPR115)

Restrictions: For Research Use only

## Handling

---

Format: Liquid

Concentration: 1 mg/mL

Buffer: phosphate buffered saline (without Mg<sup>2+</sup> and Ca<sup>2+</sup>), pH 7.4, 150 mM NaCl, 0.02 % sodium azide and 50 % glycerol.

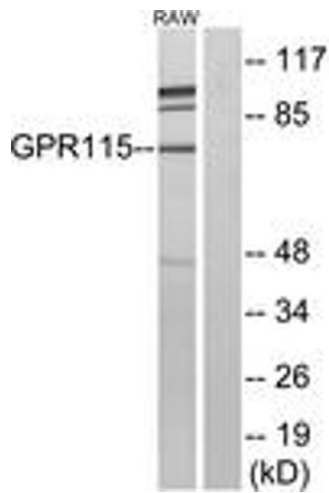
Preservative: Sodium azide

Precaution of Use: This product contains sodium azide: a POISONOUS AND HAZARDOUS SUBSTANCE which should be handled by trained staff only.

Storage: -20 °C

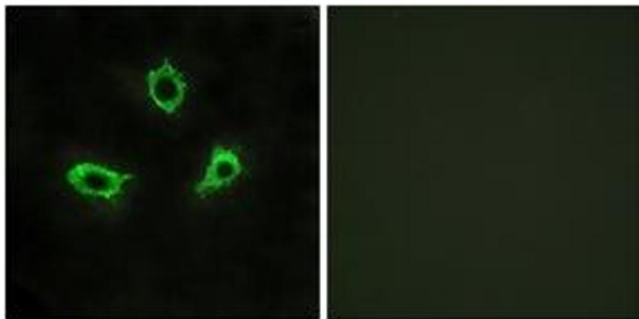
Storage Comment: Stable at -20°C for at least 1 year.

Expiry Date: 12 months



### Western Blotting

**Image 1.** Western blot analysis of extracts from RAW264.7 cells, using GPR115 Antibody. The lane on the right is treated with the synthesized peptide.



### Immunofluorescence

**Image 2.** Immunofluorescence analysis of LOVO cells, using GPR115 Antibody. The picture on the right is treated with the synthesized peptide.