



[Go to Product page](#)

Datasheet for ABIN1535626  
**anti-O3FAR1 antibody (AA 221-270)**

2 Images

Overview

Quantity:	100 µL
Target:	O3FAR1
Binding Specificity:	AA 221-270
Reactivity:	Human, Mouse, Rat
Host:	Rabbit
Clonality:	Polyclonal
Conjugate:	This O3FAR1 antibody is un-conjugated
Application:	Western Blotting (WB), ELISA, Immunofluorescence (IF)

Product Details

Immunogen:	The antiserum was produced against synthesized peptide derived from human GPR120.
Isotype:	IgG
Specificity:	GPR120 Antibody detects endogenous levels of total GPR120 protein.
Purification:	The antibody was purified from rabbit antiserum by affinity-chromatography using immunogen.
Purity:	> 95 %

Target Details

Target:	O3FAR1
Alternative Name:	GPR120 ( <a href="#">O3FAR1 Products</a> )
Background:	Synonyms: G-protein coupled receptor 120, G-protein coupled receptor PGR4, G-protein coupled

## Target Details

---

receptor GT01, G-protein coupled receptor 129, GPR120, GPR129, PGR4,  
NCBI Gene Symbol: GPR120

Molecular Weight: 42 kDa

Gene ID: 338557

OMIM: 609044

UniProt: [Q5NUL3](#)

Pathways: [Hormone Transport](#)

## Application Details

---

Application Notes: WB: 1:500~1:1000 IF: 1:100~1:500 ELISA: 1:1000

Comment: Unigene-Number: Hs.677835 (NCBI Gene Symbol: GPR120)

Restrictions: For Research Use only

## Handling

---

Format: Liquid

Concentration: 1 mg/mL

Buffer: phosphate buffered saline (without Mg<sup>2+</sup> and Ca<sup>2+</sup>), pH 7.4, 150 mM NaCl, 0.02 % sodium azide and 50 % glycerol.

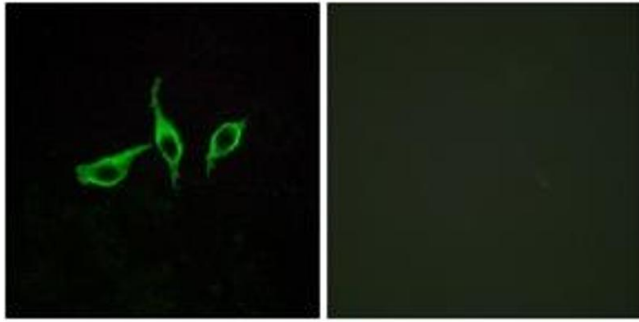
Preservative: Sodium azide

Precaution of Use: This product contains sodium azide: a POISONOUS AND HAZARDOUS SUBSTANCE which should be handled by trained staff only.

Storage: -20 °C

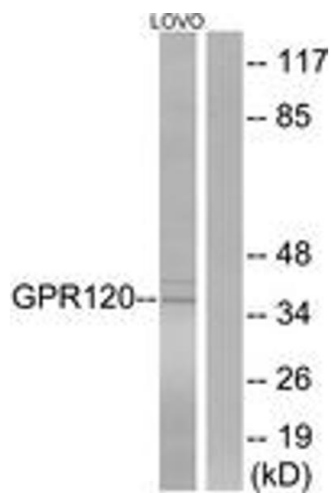
Storage Comment: Stable at -20°C for at least 1 year.

Expiry Date: 12 months



### Immunofluorescence

**Image 1.** Immunofluorescence analysis of LOVO cells, using GPR120 Antibody. The picture on the right is treated with the synthesized peptide.



### Western Blotting

**Image 2.** Western blot analysis of extracts from LOVO cells, using GPR120 Antibody. The lane on the right is treated with the synthesized peptide.