

Datasheet for ABIN1535647
anti-CHRM5 antibody (AA 281-330)[Go to Product page](#)

2 Images

Overview

Quantity:	100 µg
Target:	CHRM5
Binding Specificity:	AA 281-330
Reactivity:	Human
Host:	Rabbit
Clonality:	Polyclonal
Conjugate:	This CHRM5 antibody is un-conjugated
Application:	Western Blotting (WB), ELISA, Immunofluorescence (IF)

Product Details

Immunogen:	The antiserum was produced against synthesized peptide derived from human CHRM5.
Isotype:	IgG
Specificity:	CHRM5 Antibody detects endogenous levels of total CHRM5 protein.
Purification:	The antibody was purified from rabbit antiserum by affinity-chromatography using immunogen.
Purity:	> 95 %

Target Details

Target:	CHRM5
Alternative Name:	CHRM5 (CHRM5 Products)
Background:	Synonyms: Muscarinic acetylcholine receptor M5, CHRM5

Target Details

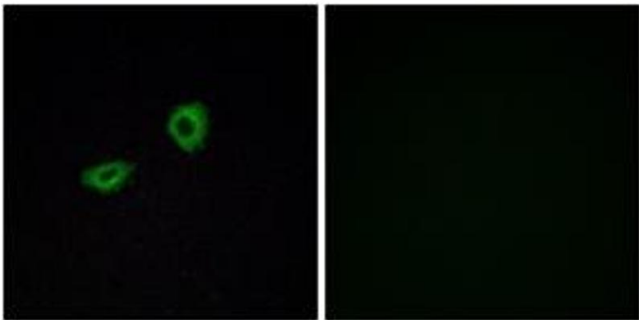
	NCBI Gene Symbol: CHRM5
Molecular Weight:	60 kDa
Gene ID:	1133
OMIM:	118496
UniProt:	P08912
Pathways:	Synaptic Membrane

Application Details

Application Notes:	WB: 1:500~1:1000 IF: 1:100~1:500 ELISA: 1:5000
Comment:	Unigene-Number: Hs.584747 (NCBI Gene Symbol: CHRM5)
Restrictions:	For Research Use only

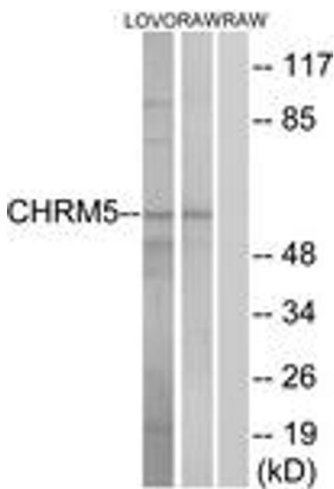
Handling

Format:	Liquid
Concentration:	1 mg/mL
Buffer:	phosphate buffered saline (without Mg ²⁺ and Ca ²⁺), pH 7.4, 150 mM NaCl, 0.02 % sodium azide and 50 % glycerol.
Preservative:	Sodium azide
Precaution of Use:	This product contains sodium azide: a POISONOUS AND HAZARDOUS SUBSTANCE which should be handled by trained staff only.
Storage:	-20 °C
Storage Comment:	Stable at -20°C for at least 1 year.
Expiry Date:	12 months



Immunofluorescence

Image 1. Immunofluorescence analysis of A549 cells, using CHRM5 Antibody. The picture on the right is treated with the synthesized peptide.



Western Blotting

Image 2. Western blot analysis of extracts from LOVO/RAW264.7 cells, using CHRM5 Antibody. The lane on the right is treated with the synthesized peptide.