



[Go to Product page](#)

Datasheet for ABIN1535649

## anti-Angiotensin II Type-1 Receptor antibody (AA 101-150)

### 2 Images

#### Overview

Quantity:	100 µg
Target:	Angiotensin II Type-1 Receptor (AGTR1)
Binding Specificity:	AA 101-150
Reactivity:	Human, Rat, Mouse
Host:	Rabbit
Clonality:	Polyclonal
Conjugate:	This Angiotensin II Type-1 Receptor antibody is un-conjugated
Application:	Western Blotting (WB), ELISA, Immunofluorescence (IF)

#### Product Details

Immunogen:	The antiserum was produced against synthesized peptide derived from human AGTR1.
Isotype:	IgG
Specificity:	AGTR1 Antibody detects endogenous levels of total AGTR1 protein.
Purification:	The antibody was purified from rabbit antiserum by affinity-chromatography using immunogen.
Purity:	> 95 %

#### Target Details

Target:	Angiotensin II Type-1 Receptor (AGTR1)
Alternative Name:	AGTR1 ( <a href="#">AGTR1 Products</a> )
Background:	Synonyms: Type-1 angiotensin II receptor, AT1, AT1AR, AT1BR, AGTR1, AGTR1A, AGTR1B,

## Target Details

---

AT2R1, AT2R1B  
NCBI Gene Symbol: AGTR1

Molecular Weight: 41 kDa

Gene ID: 185

OMIM: 106165

UniProt: [P30556](#)

Pathways: [JAK-STAT Signaling](#), [ACE Inhibitor Pathway](#), [Regulation of Systemic Arterial Blood Pressure by Hormones](#), [Feeding Behaviour](#)

## Application Details

---

Application Notes: WB: 1:500~1:1000 IF: 1:100~1:500 ELISA: 1:10000

Comment: Unigene-Number: Hs.477887, Hs.714694, (NCBI Gene Symbol: AGTR1)

Restrictions: For Research Use only

## Handling

---

Format: Liquid

Concentration: 1 mg/mL

Buffer: phosphate buffered saline (without Mg<sup>2+</sup> and Ca<sup>2+</sup>), pH 7.4, 150 mM NaCl, 0.02 % sodium azide and 50 % glycerol.

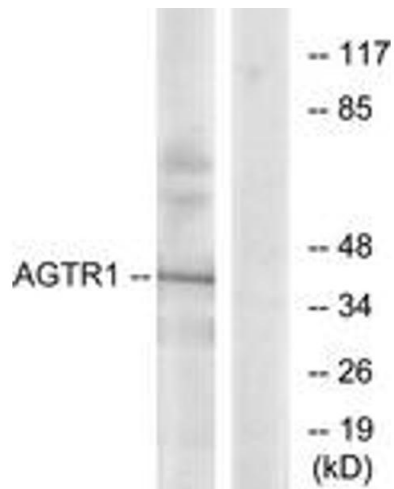
Preservative: Sodium azide

Precaution of Use: This product contains sodium azide: a POISONOUS AND HAZARDOUS SUBSTANCE which should be handled by trained staff only.

Storage: -20 °C

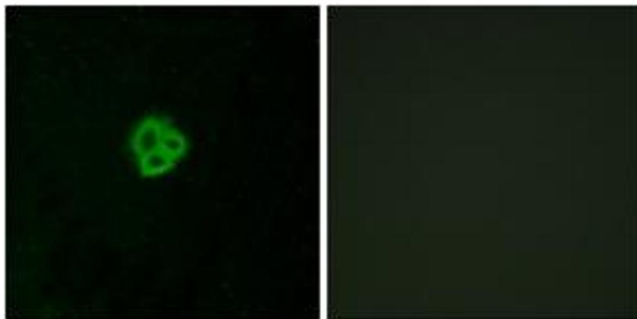
Storage Comment: Stable at -20°C for at least 1 year.

Expiry Date: 12 months



### Western Blotting

**Image 1.** Western blot analysis of extracts from K562 cells, using AGTR1 Antibody. The lane on the right is treated with the synthesized peptide.



### Immunofluorescence

**Image 2.** Immunofluorescence analysis of MCF7 cells, using AGTR1 Antibody. The picture on the right is treated with the synthesized peptide.