

Datasheet for ABIN1535655
anti-PTH1R antibody (AA 145-194)[Go to Product page](#)

3 Images

Overview

Quantity:	100 µg
Target:	PTH1R
Binding Specificity:	AA 145-194
Reactivity:	Human, Rat, Mouse
Host:	Rabbit
Clonality:	Polyclonal
Conjugate:	This PTH1R antibody is un-conjugated
Application:	Western Blotting (WB), Immunohistochemistry (IHC), ELISA, Immunofluorescence (IF)

Product Details

Immunogen:	The antiserum was produced against synthesized peptide derived from human PTHR1.
Isotype:	IgG
Specificity:	PTHR1 Antibody detects endogenous levels of total PTHR1 protein.
Purification:	The antibody was purified from rabbit antiserum by affinity-chromatography using immunogen.
Purity:	> 95 %

Target Details

Target:	PTH1R
Alternative Name:	PTHR1 (PTH1R Products)
Background:	Synonyms: Calcitonin gene-related peptide type 1 receptor, CGRP type 1 receptor, Calcitonin

Target Details

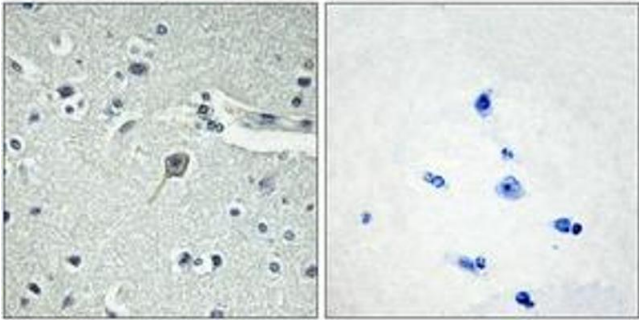
	receptor-like receptor, CALCRL, CGRPR NCBI Gene Symbol: PTH1R
Molecular Weight:	52 kDa
Gene ID:	5745
OMIM:	168468
UniProt:	Q03431
Pathways:	Regulation of Carbohydrate Metabolic Process

Application Details

Application Notes:	WB: 1:500~1:1000 IHC: 1:50~1:100 IF: 1:100~1:500 ELISA: 1:10000
Comment:	Unigene-Number: Hs.1019 (NCBI Gene Symbol: PTH1R)
Restrictions:	For Research Use only

Handling

Format:	Liquid
Concentration:	1 mg/mL
Buffer:	phosphate buffered saline (without Mg ²⁺ and Ca ²⁺), pH 7.4, 150 mM NaCl, 0.02 % sodium azide and 50 % glycerol.
Preservative:	Sodium azide
Precaution of Use:	This product contains sodium azide: a POISONOUS AND HAZARDOUS SUBSTANCE which should be handled by trained staff only.
Storage:	-20 °C
Storage Comment:	Stable at -20°C for at least 1 year.
Expiry Date:	12 months



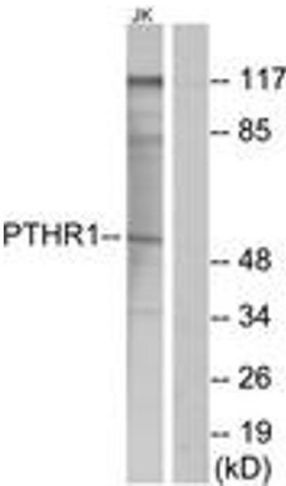
Immunohistochemistry

Image 1. Immunohistochemistry analysis of paraffin-embedded human brain tissue, using PTHR1 Antibody. The picture on the right is treated with the synthesized peptide.



Immunofluorescence

Image 2. Immunofluorescence analysis of MCF7 cells, using PTHR1 Antibody. The picture on the right is treated with the synthesized peptide.



Western Blotting

Image 3. Western blot analysis of extracts from Jurkat cells, using PTHR1 Antibody. The lane on the right is treated with the synthesized peptide.