



[Go to Product page](#)

Datasheet for ABIN1535658
anti-CCZ1B antibody (AA 411-460)

1 Image

Overview

Quantity:	100 µg
Target:	CCZ1B
Binding Specificity:	AA 411-460
Reactivity:	Human, Mouse
Host:	Rabbit
Clonality:	Polyclonal
Conjugate:	This CCZ1B antibody is un-conjugated
Application:	Western Blotting (WB), ELISA

Product Details

Immunogen:	The antiserum was produced against synthesized peptide derived from human CG028.
Isotype:	IgG
Specificity:	CG028 Antibody detects endogenous levels of total CG028 protein.
Purification:	The antibody was purified from rabbit antiserum by affinity-chromatography using immunogen.
Purity:	> 95 %

Target Details

Target:	CCZ1B
Abstract:	CCZ1B Products
Background:	Synonyms: Uncharacterized protein C7orf28, C7orf28A, CGI-43, C7orf28B

Target Details

NCBI Gene Symbol: C7orf28AANDC7orf28B

Molecular Weight: 55 kDa

Gene ID: 221960

UniProt: [095766](#)

Application Details

Application Notes: WB: 1:500~1:1000 ELISA: 1:10000

Comment: Unigene-Number: Hs.530000, Hs.567779 (NCBI Gene Symbol: C7orf28AANDC7orf28B)

Restrictions: For Research Use only

Handling

Format: Liquid

Concentration: 1 mg/mL

Buffer: phosphate buffered saline (without Mg²⁺ and Ca²⁺), pH 7.4, 150 mM NaCl, 0.02 % sodium azide and 50 % glycerol.

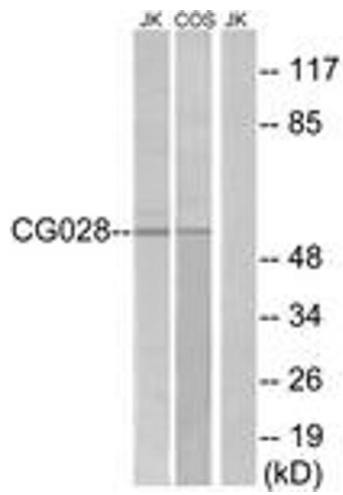
Preservative: Sodium azide

Precaution of Use: This product contains sodium azide: a POISONOUS AND HAZARDOUS SUBSTANCE which should be handled by trained staff only.

Storage: -20 °C

Storage Comment: Stable at -20°C for at least 1 year.

Expiry Date: 12 months



Western Blotting

Image 1. Western blot analysis of extracts from Jurkat/COS cells, using CG028 Antibody. The lane on the right is treated with the synthesized peptide.