



[Go to Product page](#)

Datasheet for ABIN1535671
anti-EMR2 antibody (AA 121-170)

1 Image

Overview

Quantity:	100 µL
Target:	EMR2
Binding Specificity:	AA 121-170
Reactivity:	Human
Host:	Rabbit
Clonality:	Polyclonal
Conjugate:	This EMR2 antibody is un-conjugated
Application:	Western Blotting (WB), ELISA

Product Details

Immunogen:	The antiserum was produced against synthesized peptide derived from human EMR2.
Isotype:	IgG
Specificity:	EMR2 Antibody detects endogenous levels of total EMR2 protein.
Purification:	The antibody was purified from rabbit antiserum by affinity-chromatography using immunogen.
Purity:	> 95 %

Target Details

Target:	EMR2
Alternative Name:	EMR2 (EMR2 Products)
Background:	Synonyms: EGF-like module-containing mucin-like hormone receptor-like 2, EGF-like module

Target Details

EMR2, CD312 antigen, EMR2,
NCBI Gene Symbol: EMR2

Molecular Weight: 90 kDa

Gene ID: 30817

OMIM: 606100

UniProt: [Q9UHX3](#)

Application Details

Application Notes: WB: 1:500~1:1000 ELISA: 1:1000

Comment: Unigene-Number: Hs.531619 (NCBI Gene Symbol: EMR2)

Restrictions: For Research Use only

Handling

Format: Liquid

Concentration: 1 mg/mL

Buffer: phosphate buffered saline (without Mg²⁺ and Ca²⁺), pH 7.4, 150 mM NaCl, 0.02 % sodium azide and 50 % glycerol.

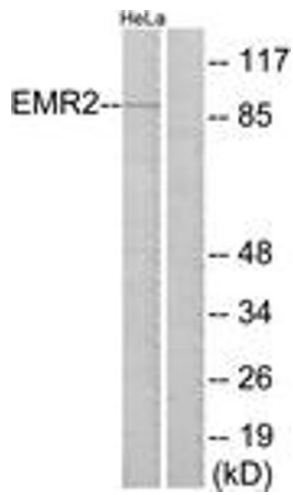
Preservative: Sodium azide

Precaution of Use: This product contains sodium azide: a POISONOUS AND HAZARDOUS SUBSTANCE which should be handled by trained staff only.

Storage: -20 °C

Storage Comment: Stable at -20°C for at least 1 year.

Expiry Date: 12 months



Western Blotting

Image 1. Western blot analysis of extracts from HeLa cells, using EMR2 Antibody. The lane on the right is treated with the synthesized peptide.