

Datasheet for ABIN1535686

anti-GPR137C antibody (AA 256-305)**3** Images[Go to Product page](#)

Overview

Quantity:	100 µg
Target:	GPR137C
Binding Specificity:	AA 256-305
Reactivity:	Human
Host:	Rabbit
Clonality:	Polyclonal
Conjugate:	This GPR137C antibody is un-conjugated
Application:	Western Blotting (WB), ELISA, Immunohistochemistry (IHC), Immunofluorescence (IF)

Product Details

Immunogen:	The antiserum was produced against synthesized peptide derived from human GPR137C.
Isotype:	IgG
Specificity:	GPR137C Antibody detects endogenous levels of total GPR137C protein.
Purification:	The antibody was purified from rabbit antiserum by affinity-chromatography using immunogen.
Purity:	> 95 %

Target Details

Target:	GPR137C
Alternative Name:	GPR137C (GPR137C Products)
Background:	Synonyms: Integral membrane protein GPR137C, Transmembrane 7 superfamily member 1-like

Target Details

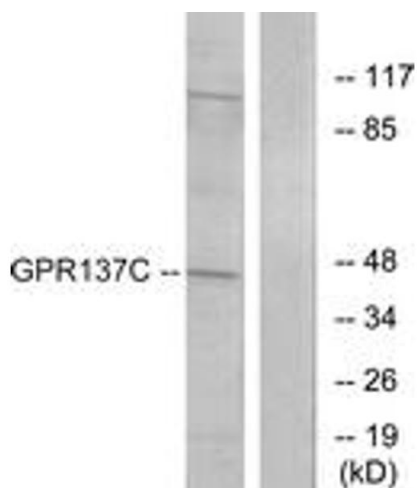
	2 protein, GPR137C, TM7SF1L2, NCBI Gene Symbol: GPR137C
Molecular Weight:	47 kDa
Gene ID:	283554
UniProt:	Q8N3F9

Application Details

Application Notes:	WB: 1:500~1:1000 IHC: 1:50~1:100 IF: 1:100~1:500 ELISA: 1:1000
Comment:	Unigene-Number: Hs.416214 (NCBI Gene Symbol: GPR137C)
Restrictions:	For Research Use only

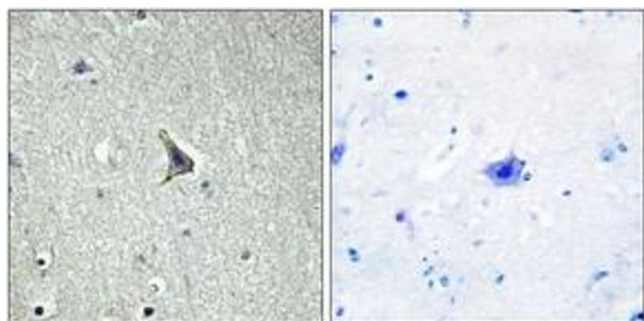
Handling

Format:	Liquid
Concentration:	1 mg/mL
Buffer:	phosphate buffered saline (without Mg ²⁺ and Ca ²⁺), pH 7.4, 150 mM NaCl, 0.02 % sodium azide and 50 % glycerol.
Preservative:	Sodium azide
Precaution of Use:	This product contains sodium azide: a POISONOUS AND HAZARDOUS SUBSTANCE which should be handled by trained staff only.
Storage:	-20 °C
Storage Comment:	Stable at -20°C for at least 1 year.
Expiry Date:	12 months



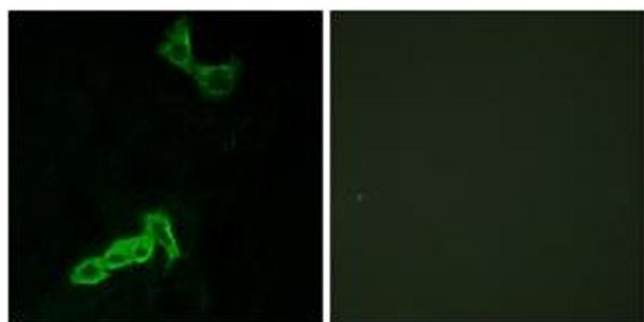
Western Blotting

Image 1. Western blot analysis of extracts from HepG2 cells, using GPR137C Antibody. The lane on the right is treated with the synthesized peptide.



Immunohistochemistry

Image 2. Immunohistochemistry analysis of paraffin-embedded human brain tissue, using GPR137C Antibody. The picture on the right is treated with the synthesized peptide.



Immunofluorescence

Image 3. Immunofluorescence analysis of MCF7 cells, using GPR137C Antibody. The picture on the right is treated with the synthesized peptide.