

Datasheet for ABIN1535687  
**anti-KCNJ5 antibody (AA 370-419)**

## 2 Images

[Go to Product page](#)

## Overview

Quantity:	100 µg
Target:	KCNJ5
Binding Specificity:	AA 370-419
Reactivity:	Human
Host:	Rabbit
Clonality:	Polyclonal
Conjugate:	This KCNJ5 antibody is un-conjugated
Application:	Western Blotting (WB), ELISA, Immunofluorescence (IF)

## Product Details

Immunogen:	The antiserum was produced against synthesized peptide derived from human KCNJ5.
Isotype:	IgG
Specificity:	KCNJ5 Antibody detects endogenous levels of total KCNJ5 protein.
Purification:	The antibody was purified from rabbit antiserum by affinity-chromatography using immunogen.
Purity:	> 95 %

## Target Details

Target:	KCNJ5
Alternative Name:	KCNJ5 ( <a href="#">KCNJ5 Products</a> )
Background:	Synonyms: G protein-activated inward rectifier potassium channel 4, GIRK4, Potassium

## Target Details

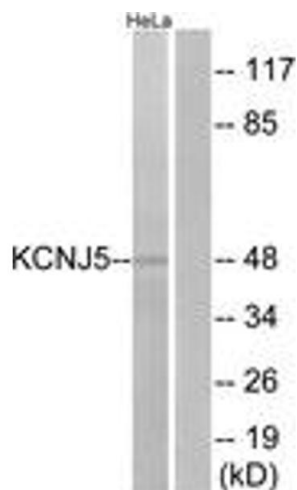
	channel, inwardly rectifying subfamily J member 5, Inward rectifier K(+) channel Kir3.4, Heart KATP channel, KATP-1, Cardiac inward rectifier, CIR, KCNJ5, GIRK4 NCBI Gene Symbol: KCNJ5
Molecular Weight:	47 kDa
Gene ID:	3762
OMIM:	600734
UniProt:	<a href="#">P48544</a>
Pathways:	<a href="#">Notch Signaling</a>

## Application Details

Application Notes:	WB: 1:500~1:1000 IF: 1:100~1:500 ELISA: 1:5000
Comment:	Unigene-Number: Hs.632109 (NCBI Gene Symbol: KCNJ5)
Restrictions:	For Research Use only

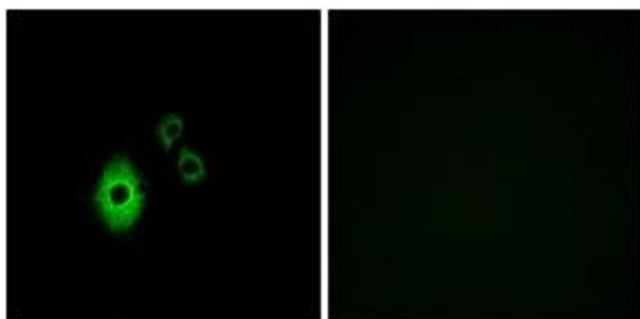
## Handling

Format:	Liquid
Concentration:	1 mg/mL
Buffer:	phosphate buffered saline (without Mg <sup>2+</sup> and Ca <sup>2+</sup> ), pH 7.4, 150 mM NaCl, 0.02 % sodium azide and 50 % glycerol.
Preservative:	Sodium azide
Precaution of Use:	This product contains sodium azide: a POISONOUS AND HAZARDOUS SUBSTANCE which should be handled by trained staff only.
Storage:	-20 °C
Storage Comment:	Stable at -20°C for at least 1 year.
Expiry Date:	12 months



#### Western Blotting

**Image 1.** Western blot analysis of extracts from HeLa cells, using KCNJ5 Antibody. The lane on the right is treated with the synthesized peptide.



#### Immunofluorescence

**Image 2.** Immunofluorescence analysis of A549 cells, using KCNJ5 Antibody. The picture on the right is treated with the synthesized peptide.