

Datasheet for ABIN1535696
anti-GPR101 antibody (AA 451-500)[Go to Product page](#)

2 Images

Overview

Quantity:	100 µg
Target:	GPR101
Binding Specificity:	AA 451-500
Reactivity:	Human, Mouse
Host:	Rabbit
Clonality:	Polyclonal
Conjugate:	This GPR101 antibody is un-conjugated
Application:	ELISA, Western Blotting (WB), Immunofluorescence (IF)

Product Details

Immunogen:	The antiserum was produced against synthesized peptide derived from human GPR101.
Isotype:	IgG
Specificity:	GPR101 Antibody detects endogenous levels of total GPR101 protein.
Purification:	The antibody was purified from rabbit antiserum by affinity-chromatography using immunogen.
Purity:	> 95 %

Target Details

Target:	GPR101
Alternative Name:	GPR101 (GPR101 Products)
Background:	Synonyms: Probable G-protein coupled receptor 101, GPR101

Target Details

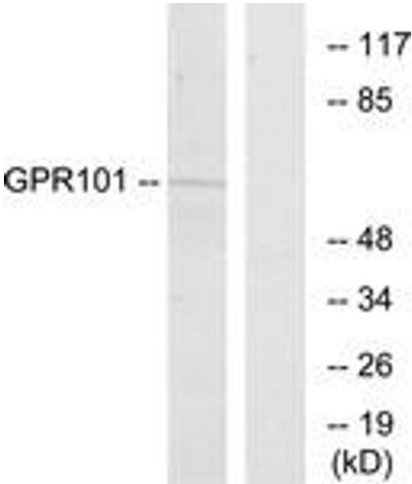
	NCBI Gene Symbol: GPR101
Molecular Weight:	56 kDa
Gene ID:	83550
OMIM:	300393
UniProt:	Q96P66

Application Details

Application Notes:	WB: 1:500~1:1000 IF: 1:100~1:500 ELISA: 1:1000
Comment:	Unigene-Number: Hs.350569 (NCBI Gene Symbol: GPR101)
Restrictions:	For Research Use only

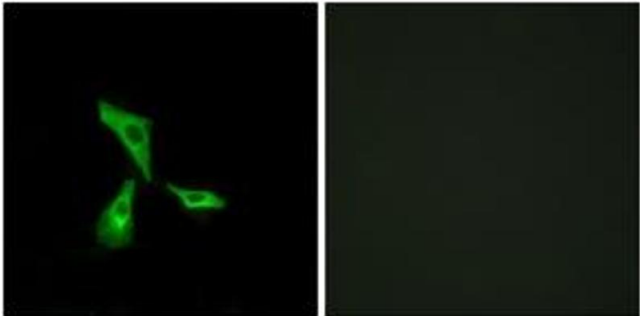
Handling

Format:	Liquid
Concentration:	1 mg/mL
Buffer:	phosphate buffered saline (without Mg ²⁺ and Ca ²⁺), pH 7.4, 150 mM NaCl, 0.02 % sodium azide and 50 % glycerol.
Preservative:	Sodium azide
Precaution of Use:	This product contains sodium azide: a POISONOUS AND HAZARDOUS SUBSTANCE which should be handled by trained staff only.
Storage:	-20 °C
Storage Comment:	Stable at -20°C for at least 1 year.
Expiry Date:	12 months



Western Blotting

Image 1. Western blot analysis of extracts from COS7 cells, using GPR101 Antibody. The lane on the right is treated with the synthesized peptide.



Immunofluorescence

Image 2. Immunofluorescence analysis of HeLa cells, using GPR101 Antibody. The picture on the right is treated with the synthesized peptide.