

Datasheet for ABIN1535710
anti-GPR142 antibody (AA 1-50)[Go to Product page](#)

2 Images

Overview

Quantity:	100 µg
Target:	GPR142
Binding Specificity:	AA 1-50
Reactivity:	Human
Host:	Rabbit
Clonality:	Polyclonal
Conjugate:	This GPR142 antibody is un-conjugated
Application:	Western Blotting (WB), ELISA, Immunofluorescence (IF)

Product Details

Immunogen:	The antiserum was produced against synthesized peptide derived from human GPR142.
Isotype:	IgG
Specificity:	GPR142 Antibody detects endogenous levels of total GPR142 protein.
Purification:	The antibody was purified from rabbit antiserum by affinity-chromatography using immunogen.
Purity:	> 95 %

Target Details

Target:	GPR142
Alternative Name:	GPR142 (GPR142 Products)
Background:	Synonyms: Probable G-protein coupled receptor 142, G-protein coupled receptor PGR2,

Target Details

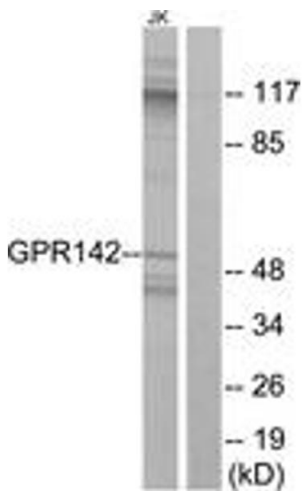
	GPR142, PGR2
	NCBI Gene Symbol: GP142
Molecular Weight:	51 kDa
Gene ID:	350383
OMIM:	609046
UniProt:	Q7Z601

Application Details

Application Notes:	WB: 1:500~1:1000 IF: 1:100~1:500 ELISA: 1:10000
Comment:	Unigene-Number: Hs.574368 (NCBI Gene Symbol: GP142)
Restrictions:	For Research Use only

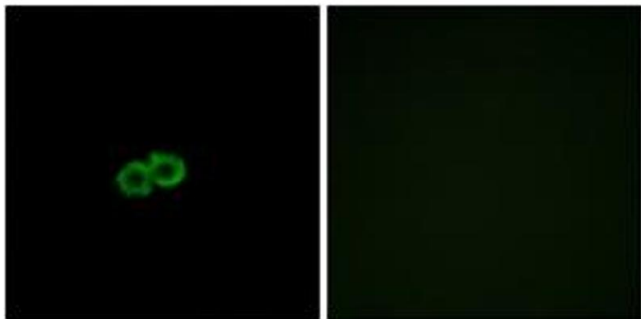
Handling

Format:	Liquid
Concentration:	1 mg/mL
Buffer:	phosphate buffered saline (without Mg ²⁺ and Ca ²⁺), pH 7.4, 150 mM NaCl, 0.02 % sodium azide and 50 % glycerol.
Preservative:	Sodium azide
Precaution of Use:	This product contains sodium azide: a POISONOUS AND HAZARDOUS SUBSTANCE which should be handled by trained staff only.
Storage:	-20 °C
Storage Comment:	Stable at -20°C for at least 1 year.
Expiry Date:	12 months



Western Blotting

Image 1. Western blot analysis of extracts from Jurkat cells, using GPR142 Antibody. The lane on the right is treated with the synthesized peptide.



Immunofluorescence

Image 2. Immunofluorescence analysis of A549 cells, using GPR142 Antibody. The picture on the right is treated with the synthesized peptide.