

Datasheet for ABIN1535716  
**anti-GPR151 antibody (AA 370-419)**[Go to Product page](#)

## 2 Images

## Overview

Quantity:	100 µg
Target:	GPR151
Binding Specificity:	AA 370-419
Reactivity:	Human, Mouse, Rat
Host:	Rabbit
Clonality:	Polyclonal
Conjugate:	This GPR151 antibody is un-conjugated
Application:	Western Blotting (WB), ELISA, Immunofluorescence (IF)

## Product Details

Immunogen:	The antiserum was produced against synthesized peptide derived from human GPR151.
Isotype:	IgG
Specificity:	GPR151 Antibody detects endogenous levels of total GPR151 protein.
Purification:	The antibody was purified from rabbit antiserum by affinity-chromatography using immunogen.
Purity:	> 95 %

## Target Details

Target:	GPR151
Alternative Name:	GPR151 ( <a href="#">GPR151 Products</a> )
Background:	Synonyms: Probable G-protein coupled receptor 151, G-protein coupled receptor PGR7, GPCR-

## Target Details

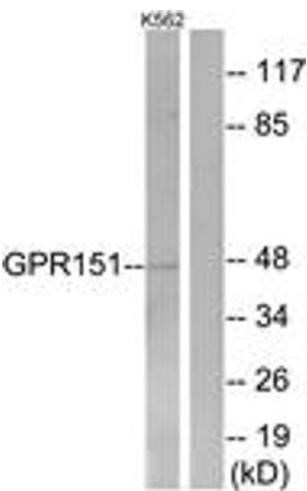
	2037, GPR151, PGR7 NCBI Gene Symbol: GP151
Molecular Weight:	46 kDa
Gene ID:	134391
UniProt:	<a href="#">Q8TDV0</a>

## Application Details

Application Notes:	WB: 1:500~1:1000 IF: 1:100~1:500 ELISA: 1:1000
Comment:	Unigene-Number: Hs.483732 (NCBI Gene Symbol: GP151)
Restrictions:	For Research Use only

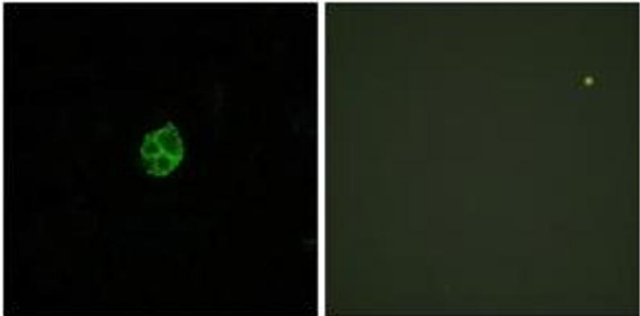
## Handling

Format:	Liquid
Concentration:	1 mg/mL
Buffer:	phosphate buffered saline (without Mg <sup>2+</sup> and Ca <sup>2+</sup> ), pH 7.4, 150 mM NaCl, 0.02 % sodium azide and 50 % glycerol.
Preservative:	Sodium azide
Precaution of Use:	This product contains sodium azide: a POISONOUS AND HAZARDOUS SUBSTANCE which should be handled by trained staff only.
Storage:	-20 °C
Storage Comment:	Stable at -20°C for at least 1 year.
Expiry Date:	12 months



### Western Blotting

**Image 1.** Western blot analysis of extracts from K562 cells, using GPR151 Antibody. The lane on the right is treated with the synthesized peptide.



### Immunofluorescence

**Image 2.** Immunofluorescence analysis of HuvEc cells, using GPR151 Antibody. The picture on the right is treated with the synthesized peptide.