

Datasheet for ABIN1535718
anti-GPR153 antibody (AA 291-340)[Go to Product page](#)

2 Images

Overview

Quantity:	100 µg
Target:	GPR153
Binding Specificity:	AA 291-340
Reactivity:	Human, Mouse, Rat
Host:	Rabbit
Clonality:	Polyclonal
Conjugate:	This GPR153 antibody is un-conjugated
Application:	Western Blotting (WB), ELISA, Immunofluorescence (IF)

Product Details

Immunogen:	The antiserum was produced against synthesized peptide derived from human GPR153.
Isotype:	IgG
Specificity:	GPR153 Antibody detects endogenous levels of total GPR153 protein.
Purification:	The antibody was purified from rabbit antiserum by affinity-chromatography using immunogen.
Purity:	> 95 %

Target Details

Target:	GPR153
Alternative Name:	GPR153 (GPR153 Products)
Background:	Synonyms: Probable G-protein coupled receptor 153, G-protein coupled receptor PGR1,

Target Details

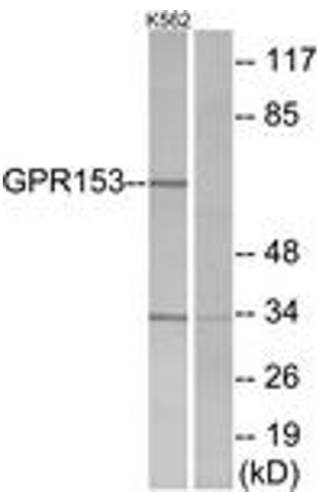
	GPR153, PGR1 NCBI Gene Symbol: GP153
Molecular Weight:	65 kDa
Gene ID:	387509
UniProt:	Q6NV75

Application Details

Application Notes:	WB: 1:500~1:1000 IF: 1:100~1:500 ELISA: 1:5000
Comment:	Unigene-Number: Hs.531581 HS.724283 (NCBI Gene Symbol: GP153)
Restrictions:	For Research Use only

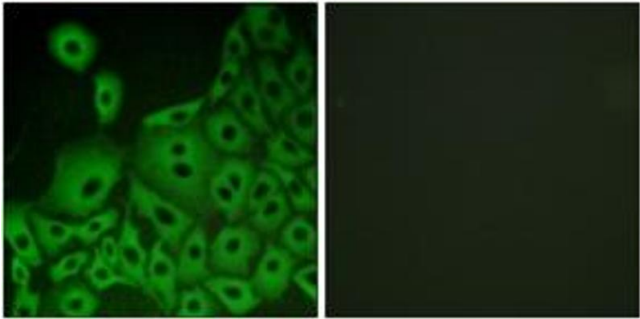
Handling

Format:	Liquid
Concentration:	1 mg/mL
Buffer:	phosphate buffered saline (without Mg ²⁺ and Ca ²⁺), pH 7.4, 150 mM NaCl, 0.02 % sodium azide and 50 % glycerol.
Preservative:	Sodium azide
Precaution of Use:	This product contains sodium azide: a POISONOUS AND HAZARDOUS SUBSTANCE which should be handled by trained staff only.
Storage:	-20 °C
Storage Comment:	Stable at -20°C for at least 1 year.
Expiry Date:	12 months



Western Blotting

Image 1. Western blot analysis of extracts from K562 cells, using GPR153 Antibody. The lane on the right is treated with the synthesized peptide.



Immunofluorescence

Image 2. Immunofluorescence analysis of A549 cells, using GPR153 Antibody. The picture on the right is treated with the synthesized peptide.