



[Go to Product page](#)

Datasheet for ABIN1535719  
**anti-GPR156 antibody (AA 501-550)**

2 Images

Overview

Quantity:	100 µL
Target:	GPR156
Binding Specificity:	AA 501-550
Reactivity:	Human
Host:	Rabbit
Clonality:	Polyclonal
Conjugate:	This GPR156 antibody is un-conjugated
Application:	ELISA, Western Blotting (WB), Immunofluorescence (IF)

Product Details

Immunogen:	The antiserum was produced against synthesized peptide derived from human GPR156.
Isotype:	IgG
Specificity:	GPR156 Antibody detects endogenous levels of total GPR156 protein.
Purification:	The antibody was purified from rabbit antiserum by affinity-chromatography using immunogen.
Purity:	> 95 %

Target Details

Target:	GPR156
Alternative Name:	GPR156 ( <a href="#">GPR156 Products</a> )
Background:	Synonyms: Probable G-protein coupled receptor 156, GABAB-related G-protein coupled

## Target Details

---

receptor, G-protein coupled receptor PGR28, GPR156, GABABL, PGR28  
NCBI Gene Symbol: GP156

Molecular Weight: 89 kDa

Gene ID: 165829

OMIM: 610464

UniProt: [Q8NFN8](#)

## Application Details

---

Application Notes: WB: 1:500~1:1000 IF: 1:100~1:500 ELISA: 1:1000

Comment: Unigene-Number: Hs.333358 (NCBI Gene Symbol: GP156)

Restrictions: For Research Use only

## Handling

---

Format: Liquid

Concentration: 1 mg/mL

Buffer: phosphate buffered saline (without Mg<sup>2+</sup> and Ca<sup>2+</sup>), pH 7.4, 150 mM NaCl, 0.02 % sodium azide and 50 % glycerol.

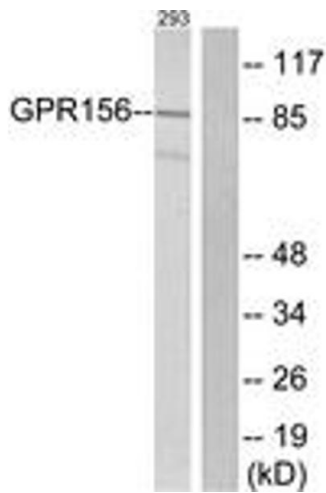
Preservative: Sodium azide

Precaution of Use: This product contains sodium azide: a POISONOUS AND HAZARDOUS SUBSTANCE which should be handled by trained staff only.

Storage: -20 °C

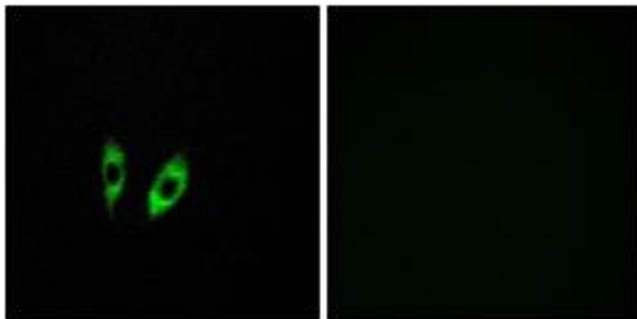
Storage Comment: Stable at -20°C for at least 1 year.

Expiry Date: 12 months



### Western Blotting

**Image 1.** Western blot analysis of extracts from 293 cells, using GPR156 Antibody. The lane on the right is treated with the synthesized peptide.



### Immunofluorescence

**Image 2.** Immunofluorescence analysis of HeLa cells, using GPR156 Antibody. The picture on the right is treated with the synthesized peptide.