

Datasheet for ABIN1535726
anti-GPR180 antibody (AA 241-290)



[Go to Product page](#)

2 Images

Overview

Quantity:	100 µg
Target:	GPR180
Binding Specificity:	AA 241-290
Reactivity:	Human, Mouse
Host:	Rabbit
Clonality:	Polyclonal
Conjugate:	This GPR180 antibody is un-conjugated
Application:	ELISA, Immunohistochemistry (IHC), Immunofluorescence (IF)

Product Details

Immunogen:	The antiserum was produced against synthesized peptide derived from human GPR180.
Isotype:	IgG
Specificity:	GPR180 Antibody detects endogenous levels of total GPR180 protein.
Purification:	The antibody was purified from rabbit antiserum by affinity-chromatography using immunogen.
Purity:	> 95 %

Target Details

Target:	GPR180
Alternative Name:	GPR180 (GPR180 Products)
Background:	Synonyms: Integral membrane protein GPR180, Intimal thickness-related receptor, GPR180, ITR

Target Details

NCBI Gene Symbol: GP180

Molecular Weight: 49 kDa

Gene ID: 160897

OMIM: 607787

UniProt: [Q86V85](#)

Application Details

Application Notes: IHC: 1:50~1:100 IF: 1:100~1:500 ELISA: 1:10000

Comment: Unigene-Number: Hs.657472 (NCBI Gene Symbol: GP180)

Restrictions: For Research Use only

Handling

Format: Liquid

Concentration: 1 mg/mL

Buffer: phosphate buffered saline (without Mg²⁺ and Ca²⁺), pH 7.4, 150 mM NaCl, 0.02 % sodium azide and 50 % glycerol.

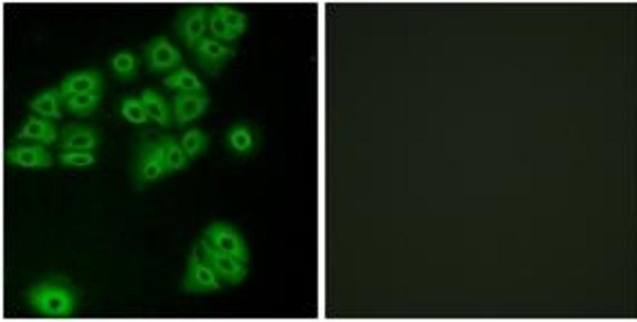
Preservative: Sodium azide

Precaution of Use: This product contains sodium azide: a POISONOUS AND HAZARDOUS SUBSTANCE which should be handled by trained staff only.

Storage: -20 °C

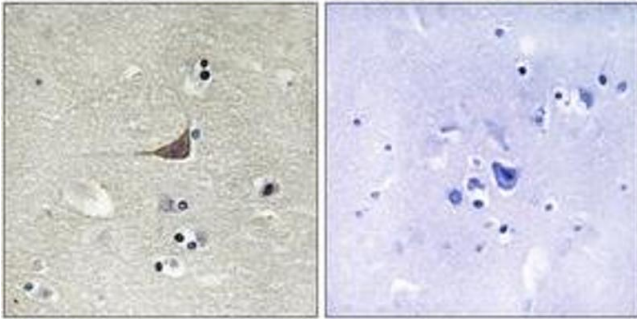
Storage Comment: Stable at -20°C for at least 1 year.

Expiry Date: 12 months



Immunofluorescence

Image 1. Immunofluorescence analysis of A549 cells, using GPR180 Antibody. The picture on the right is treated with the synthesized peptide.



Immunohistochemistry

Image 2. Immunohistochemistry analysis of paraffin-embedded human brain tissue, using GPR180 Antibody. The picture on the right is treated with the synthesized peptide.