

Datasheet for ABIN1535730
anti-GPRC5D antibody (AA 271-320)[Go to Product page](#)

2 Images

Overview

Quantity:	100 µg
Target:	GPRC5D
Binding Specificity:	AA 271-320
Reactivity:	Human, Mouse
Host:	Rabbit
Clonality:	Polyclonal
Conjugate:	This GPRC5D antibody is un-conjugated
Application:	ELISA, Western Blotting (WB), Immunofluorescence (IF)

Product Details

Immunogen:	The antiserum was produced against synthesized peptide derived from human GPRC5D.
Isotype:	IgG
Specificity:	GPRC5D Antibody detects endogenous levels of total GPRC5D protein.
Purification:	The antibody was purified from rabbit antiserum by affinity-chromatography using immunogen.
Purity:	> 95 %

Target Details

Target:	GPRC5D
Alternative Name:	GPRC5D (GPRC5D Products)
Background:	Synonyms: G-protein coupled receptor family C group 5 member D

Target Details

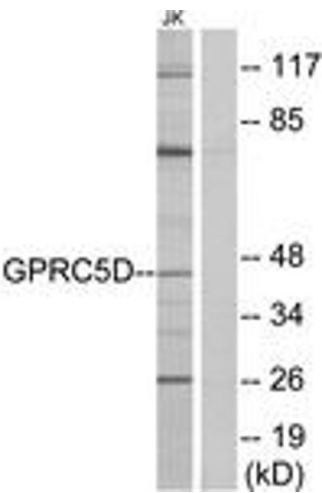
	NCBI Gene Symbol: GPC5D
Molecular Weight:	38 kDa
Gene ID:	55507
OMIM:	607437
UniProt:	Q9NZD1

Application Details

Application Notes:	WB: 1:500~1:1000 IF: 1:100~1:500 ELISA: 1:1000
Comment:	Unigene-Number: Hs.644599 (NCBI Gene Symbol: GPC5D)
Restrictions:	For Research Use only

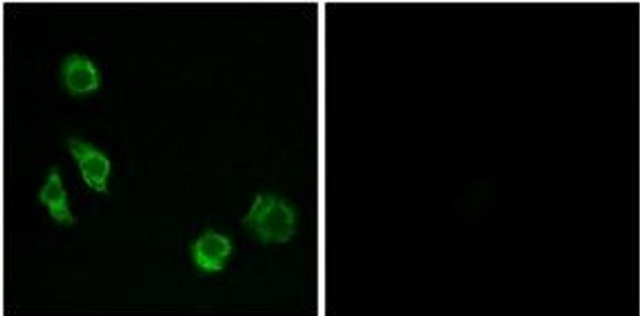
Handling

Format:	Liquid
Concentration:	1 mg/mL
Buffer:	phosphate buffered saline (without Mg ²⁺ and Ca ²⁺), pH 7.4, 150 mM NaCl, 0.02 % sodium azide and 50 % glycerol.
Preservative:	Sodium azide
Precaution of Use:	This product contains sodium azide: a POISONOUS AND HAZARDOUS SUBSTANCE which should be handled by trained staff only.
Storage:	-20 °C
Storage Comment:	Stable at -20°C for at least 1 year.
Expiry Date:	12 months



Western Blotting

Image 1. Western blot analysis of extracts from Jurkat cells, using GPRC5D Antibody. The lane on the right is treated with the synthesized peptide.



Immunofluorescence

Image 2. Immunofluorescence analysis of MCF7 cells, using GPRC5D Antibody. The picture on the right is treated with the synthesized peptide.