

Datasheet for ABIN1535731  
**anti-GPRC6A antibody (AA 471-520)**[Go to Product page](#)

## 2 Images

## Overview

Quantity:	100 µg
Target:	GPRC6A
Binding Specificity:	AA 471-520
Reactivity:	Human
Host:	Rabbit
Clonality:	Polyclonal
Conjugate:	This GPRC6A antibody is un-conjugated
Application:	Western Blotting (WB), ELISA, Immunofluorescence (IF)

## Product Details

Immunogen:	The antiserum was produced against synthesized peptide derived from human GPRC6A.
Isotype:	IgG
Specificity:	GPRC6A Antibody detects endogenous levels of total GPRC6A protein.
Purification:	The antibody was purified from rabbit antiserum by affinity-chromatography using immunogen.
Purity:	> 95 %

## Target Details

Target:	GPRC6A
Alternative Name:	GPRC6A ( <a href="#">GPRC6A Products</a> )
Background:	Synonyms: G-protein coupled receptor family C group 6 member A, hGPRC6A, G-protein

## Target Details

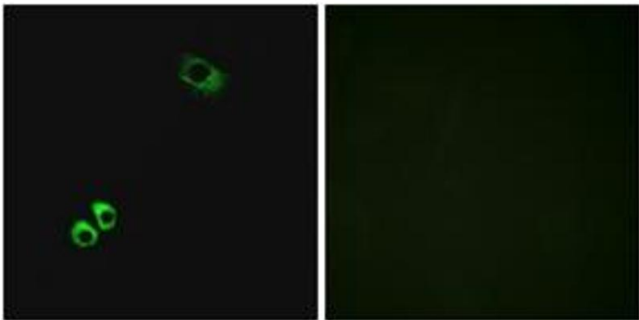
	coupled receptor 33, hGPCR33, GPRC6A, GPCR33 NCBI Gene Symbol: GPC6A
Molecular Weight:	104 kDa
Gene ID:	222545
UniProt:	<a href="#">Q5T6X5</a>

## Application Details

Application Notes:	WB: 1:500~1:1000 IF: 1:100~1:500 ELISA: 1:1000
Comment:	Unigene-Number: Hs.266745 (NCBI Gene Symbol: GPC6A)
Restrictions:	For Research Use only

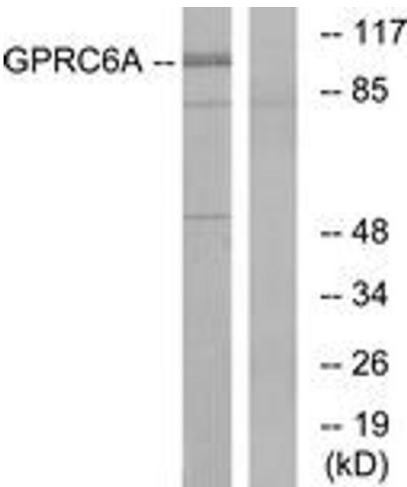
## Handling

Format:	Liquid
Concentration:	1 mg/mL
Buffer:	phosphate buffered saline (without Mg <sup>2+</sup> and Ca <sup>2+</sup> ), pH 7.4, 150 mM NaCl, 0.02 % sodium azide and 50 % glycerol.
Preservative:	Sodium azide
Precaution of Use:	This product contains sodium azide: a POISONOUS AND HAZARDOUS SUBSTANCE which should be handled by trained staff only.
Storage:	-20 °C
Storage Comment:	Stable at -20°C for at least 1 year.
Expiry Date:	12 months



Immunofluorescence

**Image 1.** Immunofluorescence analysis of MCF7 cells, using GPRC6A Antibody. The picture on the right is treated with the synthesized peptide.



Western Blotting

**Image 2.** Western blot analysis of extracts from Jurkat cells, using GPRC6A Antibody. The lane on the right is treated with the synthesized peptide.