



[Go to Product page](#)

Datasheet for ABIN1535732

## anti-G Protein-Coupled Receptor 1 antibody (AA 121-170)

### 1 Image

#### Overview

Quantity:	100 µL
Target:	G Protein-Coupled Receptor 1 (GPR1)
Binding Specificity:	AA 121-170
Reactivity:	Human, Mouse, Rat
Host:	Rabbit
Clonality:	Polyclonal
Conjugate:	This G Protein-Coupled Receptor 1 antibody is un-conjugated
Application:	ELISA, Immunofluorescence (IF)

#### Product Details

Immunogen:	The antiserum was produced against synthesized peptide derived from human GPR1.
Isotype:	IgG
Specificity:	GPR1 Antibody detects endogenous levels of total GPR1 protein.
Purification:	The antibody was purified from rabbit antiserum by affinity-chromatography using immunogen.
Purity:	> 95 %

#### Target Details

Target:	G Protein-Coupled Receptor 1 (GPR1)
Alternative Name:	GPR1 ( <a href="#">GPR1 Products</a> )
Background:	Synonyms: Probable G-protein coupled receptor 1, GPR1

## Target Details

---

NCBI Gene Symbol: GPR1

Molecular Weight: 41 kDa

Gene ID: 2825

OMIM: 600239

UniProt: [P46091](#)

Pathways: [Steroid Hormone Mediated Signaling Pathway](#), [Regulation of Carbohydrate Metabolic Process](#)

## Application Details

---

Application Notes: IF: 1:100~1:500 ELISA: 1:1000

Comment: Unigene-Number: Hs.184907 (NCBI Gene Symbol: GPR1)

Restrictions: For Research Use only

## Handling

---

Format: Liquid

Concentration: 1 mg/mL

Buffer: phosphate buffered saline (without Mg<sup>2+</sup> and Ca<sup>2+</sup>), pH 7.4, 150 mM NaCl, 0.02 % sodium azide and 50 % glycerol.

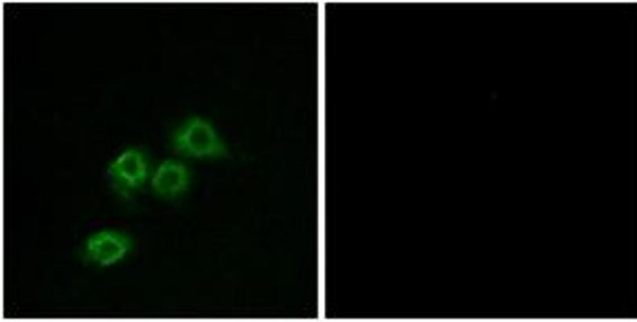
Preservative: Sodium azide

Precaution of Use: This product contains sodium azide: a POISONOUS AND HAZARDOUS SUBSTANCE which should be handled by trained staff only.

Storage: -20 °C

Storage Comment: Stable at -20°C for at least 1 year.

Expiry Date: 12 months



### Immunofluorescence

**Image 1.** Immunofluorescence analysis of MCF7 cells, using GPR1 Antibody. The picture on the right is treated with the synthesized peptide.