



[Go to Product page](#)

Datasheet for ABIN1535733

anti-G Protein-Coupled Receptor 12 antibody (AA 1-50)

1 Image

Overview

| | |
|----------------------|--|
| Quantity: | 100 µL |
| Target: | G Protein-Coupled Receptor 12 (GPR12) |
| Binding Specificity: | AA 1-50 |
| Reactivity: | Human |
| Host: | Rabbit |
| Clonality: | Polyclonal |
| Conjugate: | This G Protein-Coupled Receptor 12 antibody is un-conjugated |
| Application: | ELISA, Immunofluorescence (IF) |

Product Details

| | |
|---------------|---|
| Immunogen: | The antiserum was produced against synthesized peptide derived from human GPR12. |
| Isotype: | IgG |
| Specificity: | GPR12 Antibody detects endogenous levels of total GPR12 protein. |
| Purification: | The antibody was purified from rabbit antiserum by affinity-chromatography using immunogen. |
| Purity: | > 95 % |

Target Details

| | |
|-------------------|---|
| Target: | G Protein-Coupled Receptor 12 (GPR12) |
| Alternative Name: | GPR12 (GPR12 Products) |
| Background: | Synonyms: FLJ14454, FLJ16382, FLJ29035, G protein-coupled receptor 128, MGC142011 |

Target Details

NCBI Gene Symbol: GPR12

Molecular Weight: 36 kDa

Gene ID: 2835

OMIM: 600752

UniProt: [P47775](#)

Application Details

Application Notes: IF: 1:100~1:500 ELISA: 1:5000

Comment: Unigene-Number: Hs.123034, Hs.713113 (NCBI Gene Symbol: GPR12)

Restrictions: For Research Use only

Handling

Format: Liquid

Concentration: 1 mg/mL

Buffer: phosphate buffered saline (without Mg²⁺ and Ca²⁺), pH 7.4, 150 mM NaCl, 0.02 % sodium azide and 50 % glycerol.

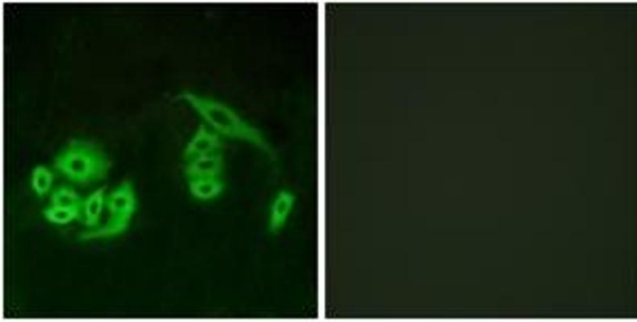
Preservative: Sodium azide

Precaution of Use: This product contains sodium azide: a POISONOUS AND HAZARDOUS SUBSTANCE which should be handled by trained staff only.

Storage: -20 °C

Storage Comment: Stable at -20°C for at least 1 year.

Expiry Date: 12 months



Immunofluorescence

Image 1. Immunofluorescence analysis of A549 cells, using GPR12 Antibody. The picture on the right is treated with the synthesized peptide.