

Datasheet for ABIN1535734
anti-GPR15 antibody (AA 201-250)[Go to Product page](#)

2 Images

Overview

Quantity:	100 µg
Target:	GPR15
Binding Specificity:	AA 201-250
Reactivity:	Human, Mouse
Host:	Rabbit
Clonality:	Polyclonal
Conjugate:	This GPR15 antibody is un-conjugated
Application:	Western Blotting (WB), ELISA, Immunofluorescence (IF)

Product Details

Immunogen:	The antiserum was produced against synthesized peptide derived from human GPR15.
Isotype:	IgG
Specificity:	GPR15 Antibody detects endogenous levels of total GPR15 protein.
Purification:	The antibody was purified from rabbit antiserum by affinity-chromatography using immunogen.
Purity:	> 95 %

Target Details

Target:	GPR15
Alternative Name:	GPR15 (GPR15 Products)
Background:	Synonyms: G-protein coupled receptor 15, BOB, GPR15

Target Details

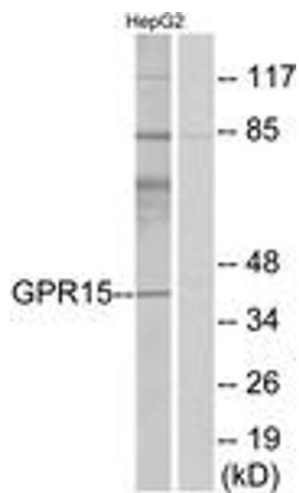
	NCBI Gene Symbol: GPR15
Molecular Weight:	40 kDa
Gene ID:	2838
OMIM:	601166
UniProt:	P49685

Application Details

Application Notes:	WB: 1:500~1:1000 IF: 1:100~1:500 ELISA: 1:10000
Comment:	Unigene-Number: Hs.563128 (NCBI Gene Symbol: GPR15)
Restrictions:	For Research Use only

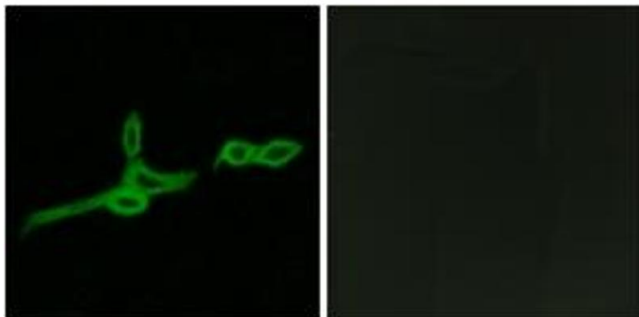
Handling

Format:	Liquid
Concentration:	1 mg/mL
Buffer:	phosphate buffered saline (without Mg ²⁺ and Ca ²⁺), pH 7.4, 150 mM NaCl, 0.02 % sodium azide and 50 % glycerol.
Preservative:	Sodium azide
Precaution of Use:	This product contains sodium azide: a POISONOUS AND HAZARDOUS SUBSTANCE which should be handled by trained staff only.
Storage:	-20 °C
Storage Comment:	Stable at -20°C for at least 1 year.
Expiry Date:	12 months



Western Blotting

Image 1. Western blot analysis of extracts from HepG2 cells, using GPR15 Antibody. The lane on the right is treated with the synthesized peptide.



Immunofluorescence

Image 2. Immunofluorescence analysis of LOVO cells, using GPR15 Antibody. The picture on the right is treated with the synthesized peptide.