

Datasheet for ABIN1535736
anti-GPR18 antibody (AA 191-240)

2 Images

[Go to Product page](#)

Overview

Quantity:	100 µg
Target:	GPR18
Binding Specificity:	AA 191-240
Reactivity:	Human, Mouse, Rat
Host:	Rabbit
Clonality:	Polyclonal
Conjugate:	This GPR18 antibody is un-conjugated
Application:	Western Blotting (WB), ELISA, Immunofluorescence (IF)

Product Details

Immunogen:	The antiserum was produced against synthesized peptide derived from human GPR18.
Isotype:	IgG
Specificity:	GPR18 Antibody detects endogenous levels of total GPR18 protein.
Purification:	The antibody was purified from rabbit antiserum by affinity-chromatography using immunogen.
Purity:	> 95 %

Target Details

Target:	GPR18
Alternative Name:	GPR18 (GPR18 Products)
Background:	Synonyms: N-arachidonyl glycine receptor, NAGly receptor, G-protein coupled receptor 18,

Target Details

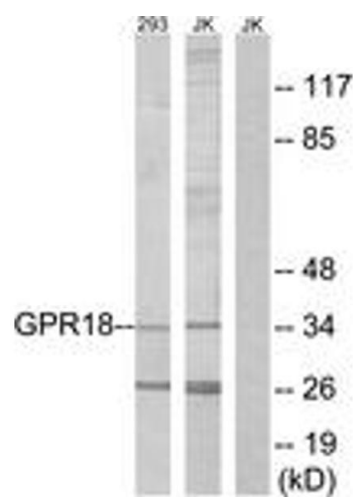
	GPR18, GPCRW, NCBI Gene Symbol: GPR18
Molecular Weight:	38 kDa
Gene ID:	2841
OMIM:	602042
UniProt:	Q14330

Application Details

Application Notes:	WB: 1:500~1:1000 IF: 1:100~1:500 ELISA: 1:1000
Comment:	Unigene-Number: Hs.631765 (NCBI Gene Symbol: GPR18)
Restrictions:	For Research Use only

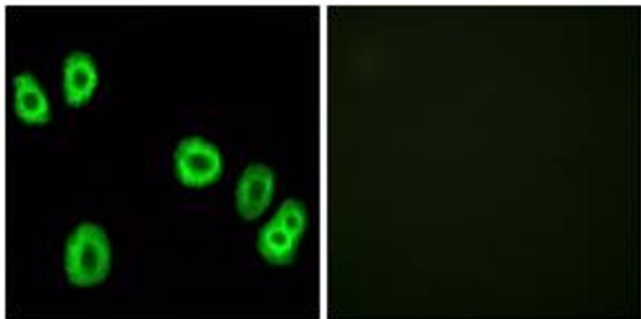
Handling

Format:	Liquid
Concentration:	1 mg/mL
Buffer:	phosphate buffered saline (without Mg ²⁺ and Ca ²⁺), pH 7.4, 150 mM NaCl, 0.02 % sodium azide and 50 % glycerol.
Preservative:	Sodium azide
Precaution of Use:	This product contains sodium azide: a POISONOUS AND HAZARDOUS SUBSTANCE which should be handled by trained staff only.
Storage:	-20 °C
Storage Comment:	Stable at -20°C for at least 1 year.
Expiry Date:	12 months



Western Blotting

Image 1. Western blot analysis of extracts from 293/Jurkat cells, using GPR18 Antibody. The lane on the right is treated with the synthesized peptide.



Immunofluorescence

Image 2. Immunofluorescence analysis of HuvEc cells, using GPR18 Antibody. The picture on the right is treated with the synthesized peptide.