



[Go to Product page](#)

Datasheet for ABIN1535741
anti-GPR31 antibody (AA 181-230)

1 Image

Overview

Quantity:	100 µg
Target:	GPR31
Binding Specificity:	AA 181-230
Reactivity:	Human
Host:	Rabbit
Clonality:	Polyclonal
Conjugate:	This GPR31 antibody is un-conjugated
Application:	Western Blotting (WB), ELISA

Product Details

Immunogen:	The antiserum was produced against synthesized peptide derived from human GPR31.
Isotype:	IgG
Specificity:	GPR31 Antibody detects endogenous levels of total GPR31 protein.
Purification:	The antibody was purified from rabbit antiserum by affinity-chromatography using immunogen.
Purity:	> 95 %

Target Details

Target:	GPR31
Alternative Name:	GPR31 (GPR31 Products)
Background:	Synonyms: Probable G-protein coupled receptor 31

Target Details

NCBI Gene Symbol: GPR31

Molecular Weight: 35 kDa

Gene ID: 2853

OMIM: 602043

UniProt: [O00270](#)

Application Details

Application Notes: WB: 1:500~1:1000 ELISA: 1:1000

Comment: Unigene-Number: Hs.248124 (NCBI Gene Symbol: GPR31)

Restrictions: For Research Use only

Handling

Format: Liquid

Concentration: 1 mg/mL

Buffer: phosphate buffered saline (without Mg²⁺ and Ca²⁺), pH 7.4, 150 mM NaCl, 0.02 % sodium azide and 50 % glycerol.

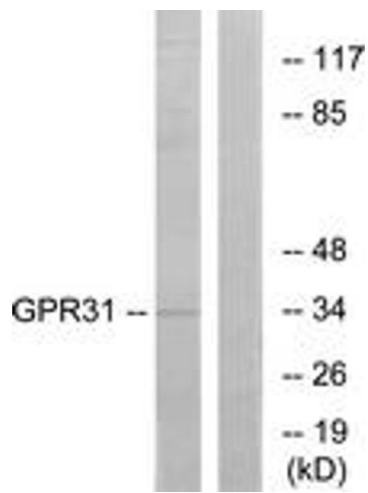
Preservative: Sodium azide

Precaution of Use: This product contains sodium azide: a POISONOUS AND HAZARDOUS SUBSTANCE which should be handled by trained staff only.

Storage: -20 °C

Storage Comment: Stable at -20°C for at least 1 year.

Expiry Date: 12 months



Western Blotting

Image 1. Western blot analysis of extracts from COLO cells, using GPR31 Antibody. The lane on the right is treated with the synthesized peptide.