



[Go to Product page](#)

Datasheet for ABIN1535749
anti-GPR75 antibody (AA 381-430)

2 Images

Overview

Quantity:	100 µL
Target:	GPR75
Binding Specificity:	AA 381-430
Reactivity:	Human, Mouse
Host:	Rabbit
Clonality:	Polyclonal
Conjugate:	This GPR75 antibody is un-conjugated
Application:	Western Blotting (WB), ELISA, Immunofluorescence (IF)

Product Details

Immunogen:	The antiserum was produced against synthesized peptide derived from human GPR75.
Isotype:	IgG
Specificity:	GPR75 Antibody detects endogenous levels of total GPR75 protein.
Purification:	The antibody was purified from rabbit antiserum by affinity-chromatography using immunogen.
Purity:	> 95 %

Target Details

Target:	GPR75
Alternative Name:	GPR75 (GPR75 Products)
Background:	Synonyms: Probable G-protein coupled receptor 75, GPR75

Target Details

NCBI Gene Symbol: GPR75

Molecular Weight: 59 kDa

Gene ID: 10936

OMIM: 606704

UniProt: [O95800](#)

Application Details

Application Notes: WB: 1:500~1:1000 IF: 1:100~1:500 ELISA: 1:5000

Comment: Unigene-Number: Hs.40763, Hs.720428 (NCBI Gene Symbol: GPR75)

Restrictions: For Research Use only

Handling

Format: Liquid

Concentration: 1 mg/mL

Buffer: phosphate buffered saline (without Mg²⁺ and Ca²⁺), pH 7.4, 150 mM NaCl, 0.02 % sodium azide and 50 % glycerol.

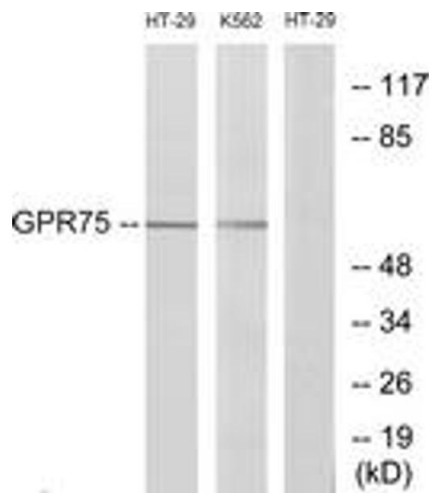
Preservative: Sodium azide

Precaution of Use: This product contains sodium azide: a POISONOUS AND HAZARDOUS SUBSTANCE which should be handled by trained staff only.

Storage: -20 °C

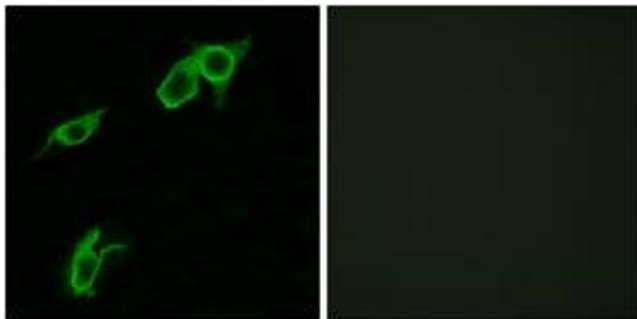
Storage Comment: Stable at -20°C for at least 1 year.

Expiry Date: 12 months



Western Blotting

Image 1. Western blot analysis of extracts from HT-29/K562 cells, using GPR75 Antibody. The lane on the right is treated with the synthesized peptide.



Immunofluorescence

Image 2. Immunofluorescence analysis of LOVO cells, using GPR75 Antibody. The picture on the right is treated with the synthesized peptide.