



[Go to Product page](#)

Datasheet for ABIN1535751
anti-GPR85 antibody (AA 181-230)

2 Images

Overview

Quantity:	100 µg
Target:	GPR85
Binding Specificity:	AA 181-230
Reactivity:	Human, Mouse, Rat
Host:	Rabbit
Clonality:	Polyclonal
Conjugate:	This GPR85 antibody is un-conjugated
Application:	ELISA, Immunohistochemistry (IHC), Immunofluorescence (IF)

Product Details

Immunogen:	The antiserum was produced against synthesized peptide derived from human GPR85.
Isotype:	IgG
Specificity:	GPR85 Antibody detects endogenous levels of total GPR85 protein.
Purification:	The antibody was purified from rabbit antiserum by affinity-chromatography using immunogen.
Purity:	> 95 %

Target Details

Target:	GPR85
Alternative Name:	GPR85 (GPR85 Products)
Background:	Synonyms: Probable G-protein coupled receptor 85, Super conserved receptor expressed in

Target Details

brain 2, GPR85, SREB2
NCBI Gene Symbol: GPR85

Molecular Weight: 41 kDa

Gene ID: 54329

OMIM: 605188

UniProt: [P60893](#)

Application Details

Application Notes: IHC: 1:50~1:100 IF: 1:100~1:500 ELISA: 1:10000

Comment: Unigene-Number: Hs.152009 (NCBI Gene Symbol: GPR85)

Restrictions: For Research Use only

Handling

Format: Liquid

Concentration: 1 mg/mL

Buffer: phosphate buffered saline (without Mg²⁺ and Ca²⁺), pH 7.4, 150 mM NaCl, 0.02 % sodium azide and 50 % glycerol.

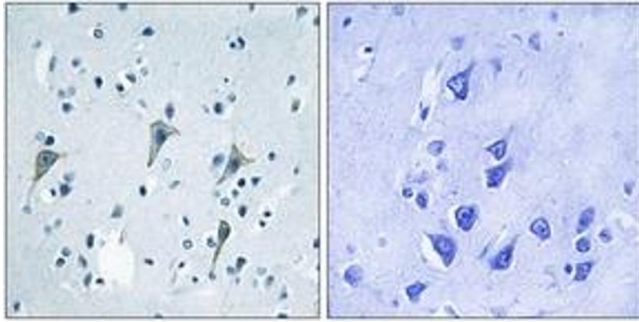
Preservative: Sodium azide

Precaution of Use: This product contains sodium azide: a POISONOUS AND HAZARDOUS SUBSTANCE which should be handled by trained staff only.

Storage: -20 °C

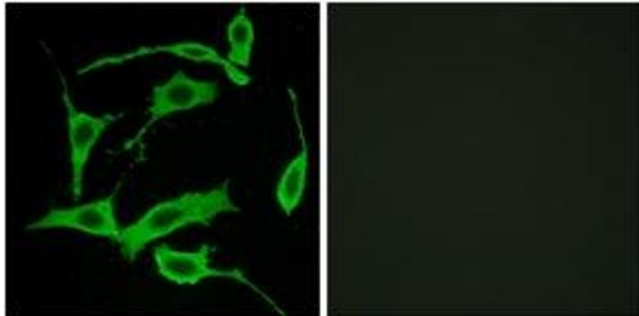
Storage Comment: Stable at -20°C for at least 1 year.

Expiry Date: 12 months



Immunohistochemistry

Image 1. Immunohistochemistry analysis of paraffin-embedded human brain tissue, using GPR85 Antibody. The picture on the right is treated with the synthesized peptide.



Immunofluorescence

Image 2. Immunofluorescence analysis of LOVO cells, using GPR85 Antibody. The picture on the right is treated with the synthesized peptide.