



[Go to Product page](#)

Datasheet for ABIN1535755
anti-GRM2 antibody (AA 241-290)

2 Images

Overview

Quantity:	100 µg
Target:	GRM2
Binding Specificity:	AA 241-290
Reactivity:	Human, Rat, Mouse
Host:	Rabbit
Clonality:	Polyclonal
Conjugate:	This GRM2 antibody is un-conjugated
Application:	ELISA, Immunohistochemistry (IHC), Immunofluorescence (IF)

Product Details

Immunogen:	The antiserum was produced against synthesized peptide derived from human GRM2.
Isotype:	IgG
Specificity:	GRM2 Antibody detects endogenous levels of total GRM2 protein.
Purification:	The antibody was purified from rabbit antiserum by affinity-chromatography using immunogen.
Purity:	> 95 %

Target Details

Target:	GRM2
Alternative Name:	GRM2 (GRM2 Products)
Background:	Synonyms: Metabotropic glutamate receptor 2, mGluR2, GRM2, GPRC1B, MGLUR2,

Target Details

NCBI Gene Symbol: GRM2

Molecular Weight: 95 kDa

Gene ID: 2912

OMIM: 604099

UniProt: [Q14416](#)

Pathways: [cAMP Metabolic Process](#), [Dicarboxylic Acid Transport](#)

Application Details

Application Notes: IHC: 1:50~1:100 IF: 1:100~1:500 ELISA: 1:1000

Comment: Unigene-Number: Hs.121510 (NCBI Gene Symbol: GRM2)

Restrictions: For Research Use only

Handling

Format: Liquid

Concentration: 1 mg/mL

Buffer: phosphate buffered saline (without Mg²⁺ and Ca²⁺), pH 7.4, 150 mM NaCl, 0.02 % sodium azide and 50 % glycerol.

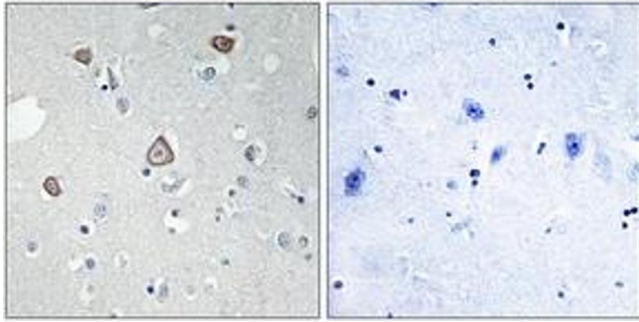
Preservative: Sodium azide

Precaution of Use: This product contains sodium azide: a POISONOUS AND HAZARDOUS SUBSTANCE which should be handled by trained staff only.

Storage: -20 °C

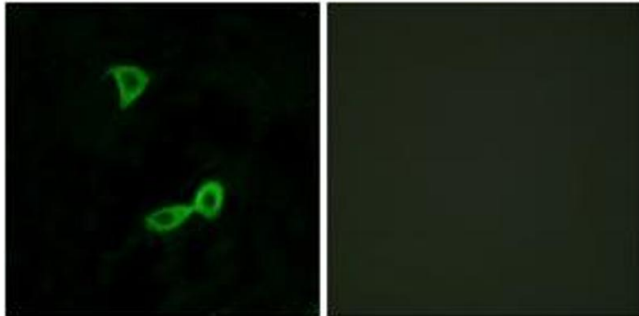
Storage Comment: Stable at -20°C for at least 1 year.

Expiry Date: 12 months



Immunohistochemistry

Image 1. Immunohistochemistry analysis of paraffin-embedded human brain tissue, using GRM2 Antibody. The picture on the right is treated with the synthesized peptide.



Immunofluorescence

Image 2. Immunofluorescence analysis of LOVO cells, using GRM2 Antibody. The picture on the right is treated with the synthesized peptide.