



Datasheet for ABIN1535774  
**anti-MRGPRE antibody (AA 171-220)**



[Go to Product page](#)

1 Image

Overview

|                      |                                       |
|----------------------|---------------------------------------|
| Quantity:            | 100 µg                                |
| Target:              | MRGPRE                                |
| Binding Specificity: | AA 171-220                            |
| Reactivity:          | Human, Rat, Mouse                     |
| Host:                | Rabbit                                |
| Clonality:           | Polyclonal                            |
| Conjugate:           | This MRGPRE antibody is un-conjugated |
| Application:         | Western Blotting (WB), ELISA          |

Product Details

|               |   |
|---------------|---|
| Immunogen:    | The antiserum was produced against synthesized peptide derived from human MRGRE.            |
| Isotype:      | IgG   |
| Specificity:  | MRGRE Antibody detects endogenous levels of total MRGRE protein.                            |
| Purification: | The antibody was purified from rabbit antiserum by affinity-chromatography using immunogen. |
| Purity:       | > 95 %  |

Target Details

|             |  |
|-------------|--|
| Target:     | MRGPRE   |
| Abstract:   | <a href="#">MRGPRE Products</a>  |
| Background: | Synonyms: Mas-related G-protein coupled receptor member E, G-protein coupled receptor 167, |

## Target Details

---

MRGPRE, GPR167, MRGE,  
NCBI Gene Symbol: MRGRE

Molecular Weight: 34 kDa

Gene ID: 116534

OMIM: 607232

UniProt: [Q86SM8](#)

## Application Details

---

Application Notes: WB: 1:500~1:1000 ELISA: 1:40000

Comment: Unigene-Number: Hs.706565 (NCBI Gene Symbol: MRGRE)

Restrictions: For Research Use only

## Handling

---

Format: Liquid

Concentration: 1 mg/mL

Buffer: phosphate buffered saline (without Mg<sup>2+</sup> and Ca<sup>2+</sup>), pH 7.4, 150 mM NaCl, 0.02 % sodium azide and 50 % glycerol.

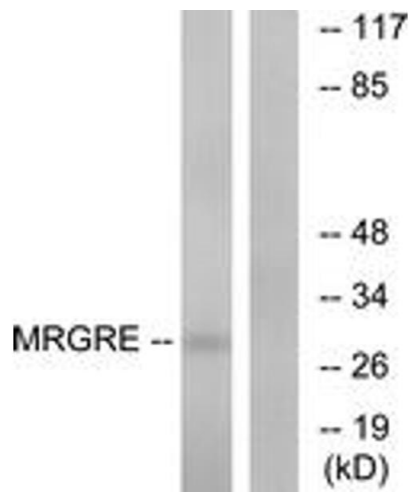
Preservative: Sodium azide

Precaution of Use: This product contains sodium azide: a POISONOUS AND HAZARDOUS SUBSTANCE which should be handled by trained staff only.

Storage: -20 °C

Storage Comment: Stable at -20°C for at least 1 year.

Expiry Date: 12 months



#### Western Blotting

**Image 1.** Western blot analysis of extracts from HeLa cells, using MRGRE Antibody. The lane on the right is treated with the synthesized peptide.