

Datasheet for ABIN1535775
anti-Mrgprf antibody (AA 271-320)



[Go to Product page](#)

1 Image

Overview

Quantity:	100 µL
Target:	Mrgprf
Binding Specificity:	AA 271-320
Reactivity:	Human, Mouse, Rat
Host:	Rabbit
Clonality:	Polyclonal
Conjugate:	This Mrgprf antibody is un-conjugated
Application:	Western Blotting (WB), ELISA

Product Details

Immunogen:	The antiserum was produced against synthesized peptide derived from human MRGRF.
Isotype:	IgG
Specificity:	MRGRF Antibody detects endogenous levels of total MRGRF protein.
Purification:	The antibody was purified from rabbit antiserum by affinity-chromatography using immunogen.
Purity:	> 95 %

Target Details

Target:	Mrgprf
Abstract:	Mrgprf Products
Background:	Synonyms: Mas-related G-protein coupled receptor member F, Mas-related gene F protein, G-

Target Details

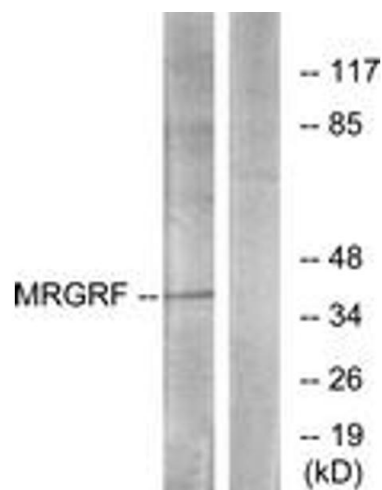
	protein coupled receptor 140, G-protein coupled receptor 168, MRGPRF, GPR140, GPR168, MRGF, PSEC0142, NCBI Gene Symbol: MRGRF
Molecular Weight:	38 kDa
Gene ID:	116535
OMIM:	607233
UniProt:	Q96AM1

Application Details

Application Notes:	WB: 1:500~1:1000 ELISA: 1:5000
Comment:	Unigene-Number: Hs.118513, Hs.602397 (NCBI Gene Symbol: MRGRF)
Restrictions:	For Research Use only

Handling

Format:	Liquid
Concentration:	1 mg/mL
Buffer:	phosphate buffered saline (without Mg ²⁺ and Ca ²⁺), pH 7.4, 150 mM NaCl, 0.02 % sodium azide and 50 % glycerol.
Preservative:	Sodium azide
Precaution of Use:	This product contains sodium azide: a POISONOUS AND HAZARDOUS SUBSTANCE which should be handled by trained staff only.
Storage:	-20 °C
Storage Comment:	Stable at -20°C for at least 1 year.
Expiry Date:	12 months



Western Blotting

Image 1. Western blot analysis of extracts from HuvEc cells, using MRGRF Antibody. The lane on the right is treated with the synthesized peptide.