

Datasheet for ABIN1535778
anti-MRGPRX4 antibody (AA 271-320)[Go to Product page](#)

2 Images

Overview

Quantity:	100 µg
Target:	MRGPRX4
Binding Specificity:	AA 271-320
Reactivity:	Human
Host:	Rabbit
Clonality:	Polyclonal
Conjugate:	This MRGPRX4 antibody is un-conjugated
Application:	Western Blotting (WB), ELISA, Immunofluorescence (IF)

Product Details

Immunogen:	The antiserum was produced against synthesized peptide derived from human MRGX4.
Isotype:	IgG
Specificity:	MRGX4 Antibody detects endogenous levels of total MRGX4 protein.
Purification:	The antibody was purified from rabbit antiserum by affinity-chromatography using immunogen.
Purity:	> 95 %

Target Details

Target:	MRGPRX4
Alternative Name:	MRGX4 (MRGPRX4 Products)
Background:	Synonyms: Mas-related G-protein coupled receptor member X4, Sensory neuron-specific G-

Target Details

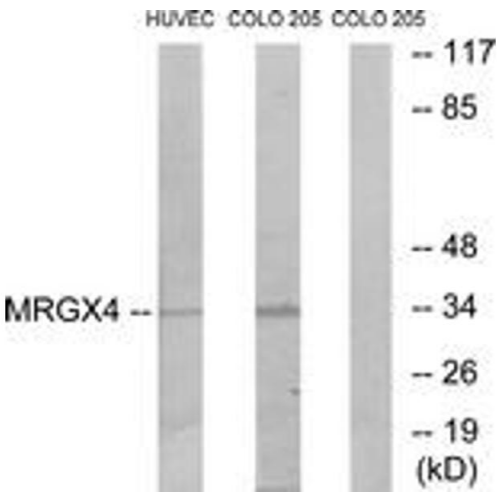
	protein coupled receptor 5/6, MRGPRX4, MRGX4, SNSR5, SNSR6, NCBI Gene Symbol: MRGX4
Molecular Weight:	36 kDa
Gene ID:	117196
OMIM:	607230
UniProt:	Q96LA9

Application Details

Application Notes:	WB: 1:500~1:1000 IF: 1:100~1:500 ELISA: 1:40000
Comment:	Unigene-Number: Hs.632138 (NCBI Gene Symbol: MRGX4)
Restrictions:	For Research Use only

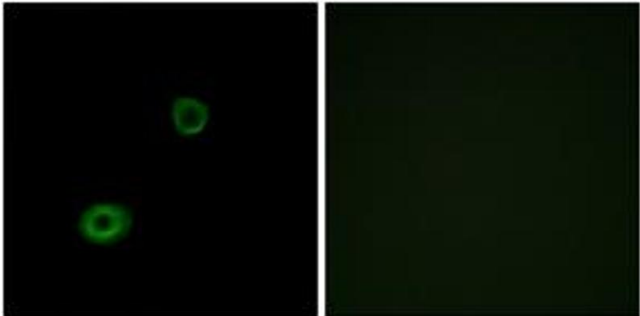
Handling

Format:	Liquid
Concentration:	1 mg/mL
Buffer:	phosphate buffered saline (without Mg ²⁺ and Ca ²⁺), pH 7.4, 150 mM NaCl, 0.02 % sodium azide and 50 % glycerol.
Preservative:	Sodium azide
Precaution of Use:	This product contains sodium azide: a POISONOUS AND HAZARDOUS SUBSTANCE which should be handled by trained staff only.
Storage:	-20 °C
Storage Comment:	Stable at -20°C for at least 1 year.
Expiry Date:	12 months



Western Blotting

Image 1. Western blot analysis of extracts from HuvEc/COLO cells, using MRGX4 Antibody. The lane on the right is treated with the synthesized peptide.



Immunofluorescence

Image 2. Immunofluorescence analysis of A549 cells, using MRGX4 Antibody. The picture on the right is treated with the synthesized peptide.