

Datasheet for ABIN1535779 anti-MC1 Receptor antibody (AA 268-317)



[Go to Product page](#)

2 Images

Overview

Quantity:	100 µg
Target:	MC1 Receptor (MC1R)
Binding Specificity:	AA 268-317
Reactivity:	Human
Host:	Rabbit
Clonality:	Polyclonal
Conjugate:	This MC1 Receptor antibody is un-conjugated
Application:	ELISA, Western Blotting (WB), Immunofluorescence (IF)

Product Details

Immunogen:	The antiserum was produced against synthesized peptide derived from human MSHR.
Isotype:	IgG
Specificity:	MSHR Antibody detects endogenous levels of total MSHR protein.
Purification:	The antibody was purified from rabbit antiserum by affinity-chromatography using immunogen.
Purity:	> 95 %

Target Details

Target:	MC1 Receptor (MC1R)
Alternative Name:	MSHR (MC1R Products)
Background:	Synonyms: Melanocyte-stimulating hormone receptor, MSH-R, Melanotropin receptor,

Target Details

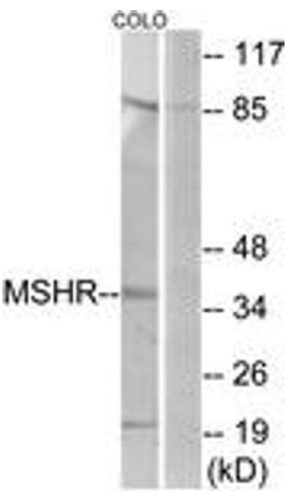
	Melanocortin receptor 1, MC1-R, MC1R, MSHR, NCBI Gene Symbol: MSHR
Molecular Weight:	34 kDa
Gene ID:	4157
OMIM:	155555
UniProt:	Q01726
Pathways:	cAMP Metabolic Process , Feeding Behaviour

Application Details

Application Notes:	WB: 1:500~1:1000 IF: 1:100~1:500 ELISA: 1:1000
Comment:	Unigene-Number: Hs.513829 (NCBI Gene Symbol: MSHR)
Restrictions:	For Research Use only

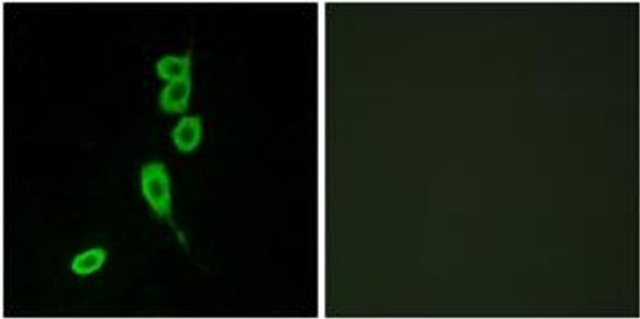
Handling

Format:	Liquid
Concentration:	1 mg/mL
Buffer:	phosphate buffered saline (without Mg ²⁺ and Ca ²⁺), pH 7.4, 150 mM NaCl, 0.02 % sodium azide and 50 % glycerol.
Preservative:	Sodium azide
Precaution of Use:	This product contains sodium azide: a POISONOUS AND HAZARDOUS SUBSTANCE which should be handled by trained staff only.
Storage:	-20 °C
Storage Comment:	Stable at -20°C for at least 1 year.
Expiry Date:	12 months



Western Blotting

Image 1. Western blot analysis of extracts from COLO205 cells, using MSHR Antibody. The lane on the right is treated with the synthesized peptide.



Immunofluorescence

Image 2. Immunofluorescence analysis of LOVO cells, using MSHR Antibody. The picture on the right is treated with the synthesized peptide.