

Datasheet for ABIN1535789
anti-NPY2R antibody (AA 1-50)[Go to Product page](#)

2 Images

Overview

Quantity:	100 µg
Target:	NPY2R
Binding Specificity:	AA 1-50
Reactivity:	Human, Mouse, Rat
Host:	Rabbit
Clonality:	Polyclonal
Conjugate:	This NPY2R antibody is un-conjugated
Application:	Western Blotting (WB), ELISA, Immunofluorescence (IF)

Product Details

Immunogen:	The antiserum was produced against synthesized peptide derived from human NPY2R.
Isotype:	IgG
Specificity:	NPY2R Antibody detects endogenous levels of total NPY2R protein.
Purification:	The antibody was purified from rabbit antiserum by affinity-chromatography using immunogen.
Purity:	> 95 %

Target Details

Target:	NPY2R
Alternative Name:	NPY2R (NPY2R Products)
Background:	Synonyms: Neuropeptide Y receptor type 2, NPY2-R, NPY-Y2 receptor, NPY2R

Target Details

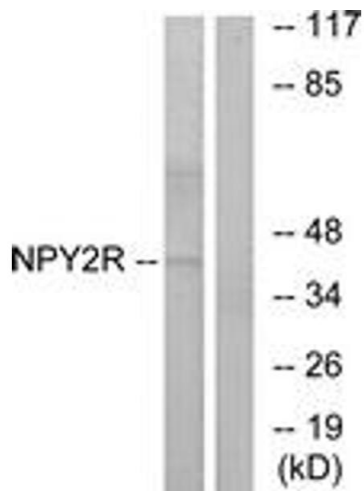
	NCBI Gene Symbol: NPY2R
Molecular Weight:	42 kDa
Gene ID:	4887
OMIM:	162642
UniProt:	P49146
Pathways:	cAMP Metabolic Process , Synaptic Membrane , Feeding Behaviour

Application Details

Application Notes:	WB: 1:500~1:1000 IF: 1:100~1:500 ELISA: 1:1000
Comment:	Unigene-Number: Hs.37125 (NCBI Gene Symbol: NPY2R)
Restrictions:	For Research Use only

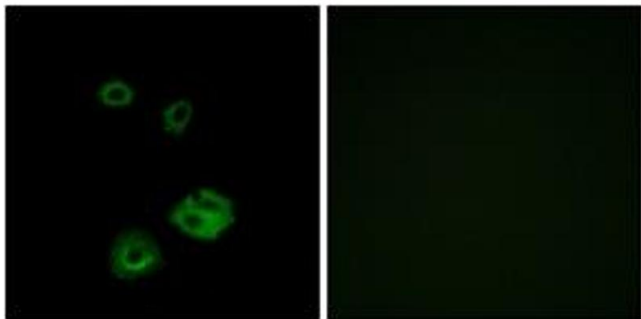
Handling

Format:	Liquid
Concentration:	1 mg/mL
Buffer:	phosphate buffered saline (without Mg ²⁺ and Ca ²⁺), pH 7.4, 150 mM NaCl, 0.02 % sodium azide and 50 % glycerol.
Preservative:	Sodium azide
Precaution of Use:	This product contains sodium azide: a POISONOUS AND HAZARDOUS SUBSTANCE which should be handled by trained staff only.
Storage:	-20 °C
Storage Comment:	Stable at -20°C for at least 1 year.
Expiry Date:	12 months



Western Blotting

Image 1. Western blot analysis of extracts from HepG2 cells, using NPY2R Antibody. The lane on the right is treated with the synthesized peptide.



Immunofluorescence

Image 2. Immunofluorescence analysis of A549 cells, using NPY2R Antibody. The picture on the right is treated with the synthesized peptide.