

Datasheet for ABIN1535790  
**anti-NPY5R antibody (AA 221-270)**

## 3 Images

[Go to Product page](#)

## Overview

Quantity:	100 µg
Target:	NPY5R
Binding Specificity:	AA 221-270
Reactivity:	Human, Mouse, Rat
Host:	Rabbit
Clonality:	Polyclonal
Conjugate:	This NPY5R antibody is un-conjugated
Application:	Western Blotting (WB), Immunohistochemistry (IHC), ELISA, Immunofluorescence (IF)

## Product Details

Immunogen:	The antiserum was produced against synthesized peptide derived from human NPY5R.
Isotype:	IgG
Specificity:	NPY5R Antibody detects endogenous levels of total NPY5R protein.
Purification:	The antibody was purified from rabbit antiserum by affinity-chromatography using immunogen.
Purity:	> 95 %

## Target Details

Target:	NPY5R
Alternative Name:	NPY5R ( <a href="#">NPY5R Products</a> )
Background:	Synonyms: Neuropeptide Y receptor type 5, NPY5-R, NPY-Y5 receptor, Y5 receptor, NPY5, NPY5R

## Target Details

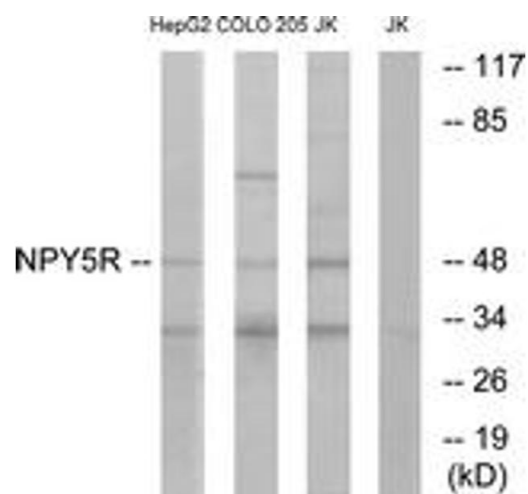
	NPY5R NCBI Gene Symbol: NPY5R
Molecular Weight:	51 kDa
Gene ID:	4889
OMIM:	602001
UniProt:	<a href="#">Q15761</a>
Pathways:	<a href="#">Feeding Behaviour</a>

## Application Details

Application Notes:	WB: 1:500~1:1000 IHC: 1:50~1:100 IF: 1:100~1:500 ELISA: 1:20000
Comment:	Unigene-Number: Hs.519058, Hs.598503 (NCBI Gene Symbol: NPY5R)
Restrictions:	For Research Use only

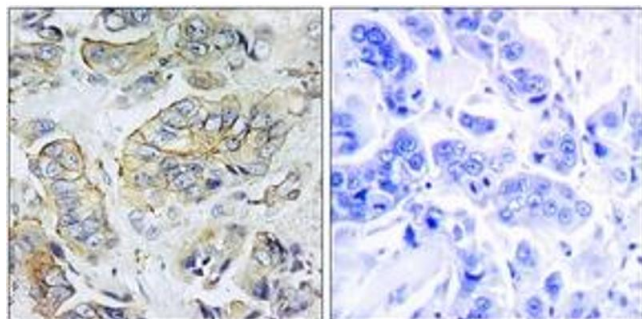
## Handling

Format:	Liquid
Concentration:	1 mg/mL
Buffer:	phosphate buffered saline (without Mg <sup>2+</sup> and Ca <sup>2+</sup> ), pH 7.4, 150 mM NaCl, 0.02 % sodium azide and 50 % glycerol.
Preservative:	Sodium azide
Precaution of Use:	This product contains sodium azide: a POISONOUS AND HAZARDOUS SUBSTANCE which should be handled by trained staff only.
Storage:	-20 °C
Storage Comment:	Stable at -20°C for at least 1 year.
Expiry Date:	12 months



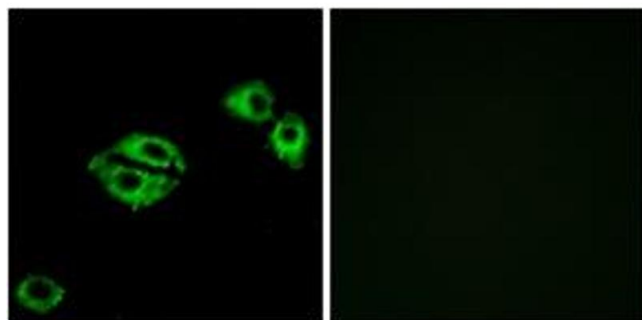
### Western Blotting

**Image 1.** Western blot analysis of extracts from COLO/Jurkat/HepG2 cells, using NPY5R Antibody. The lane on the right is treated with the synthesized peptide.



### Immunohistochemistry

**Image 2.** Immunohistochemistry analysis of paraffin-embedded human breast carcinoma tissue, using NPY5R Antibody. The picture on the right is treated with the synthesized peptide.



### Immunofluorescence

**Image 3.** Immunofluorescence analysis of A549 cells, using NPY5R Antibody. The picture on the right is treated with the synthesized peptide.