

Datasheet for ABIN1535796
anti-OR10C1 antibody (AA 61-110)[Go to Product page](#)

1 Image

Overview

Quantity:	100 µg
Target:	OR10C1
Binding Specificity:	AA 61-110
Reactivity:	Human
Host:	Rabbit
Clonality:	Polyclonal
Conjugate:	This OR10C1 antibody is un-conjugated
Application:	Western Blotting (WB), ELISA

Product Details

Immunogen:	The antiserum was produced against synthesized peptide derived from human OR10C1.
Isotype:	IgG
Specificity:	OR10C1 Antibody detects endogenous levels of total OR10C1 protein.
Purification:	The antibody was purified from rabbit antiserum by affinity-chromatography using immunogen.
Purity:	> 95 %

Target Details

Target:	OR10C1
Alternative Name:	OR10C1 (OR10C1 Products)
Background:	Synonyms: Olfactory receptor 10C1, Hs6M1-17, Olfactory receptor 10C2 , OR10C1 , OR10C2

Target Details

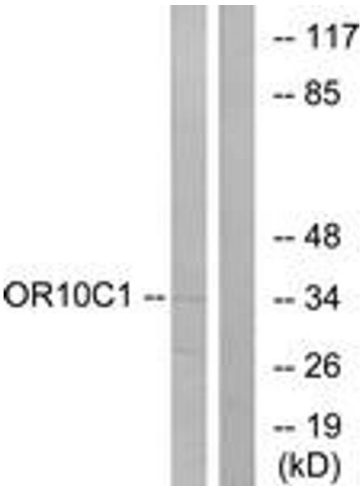
	NCBI Gene Symbol: O10C1
Molecular Weight:	34 kDa
Gene ID:	442194
UniProt:	Q96KK4 , Q5SUN7

Application Details

Application Notes:	WB: 1:500~1:1000 ELISA: 1:40000
Comment:	Unigene-Number: Hs.631997 (NCBI Gene Symbol: O10C1)
Restrictions:	For Research Use only

Handling

Format:	Liquid
Concentration:	1 mg/mL
Buffer:	phosphate buffered saline (without Mg2+ and Ca2+), pH 7.4, 150 mM NaCl, 0.02 % sodium azide and 50 % glycerol.
Preservative:	Sodium azide
Precaution of Use:	This product contains sodium azide: a POISONOUS AND HAZARDOUS SUBSTANCE which should be handled by trained staff only.
Storage:	-20 °C
Storage Comment:	Stable at -20°C for at least 1 year.
Expiry Date:	12 months



Western Blotting

Image 1. Western blot analysis of extracts from LOVO cells, using OR10C1 Antibody. The lane on the right is treated with the synthesized peptide.