



[Go to Product page](#)

Datasheet for ABIN1535805
anti-OR2A25 antibody (AA 241-290)

2 Images

Overview

Quantity:	100 µg
Target:	OR2A25
Binding Specificity:	AA 241-290
Reactivity:	Human
Host:	Rabbit
Clonality:	Polyclonal
Conjugate:	This OR2A25 antibody is un-conjugated
Application:	Western Blotting (WB), ELISA, Immunofluorescence (IF)

Product Details

Immunogen:	The antiserum was produced against synthesized peptide derived from human OR2A25.
Isotype:	IgG
Specificity:	OR2A25 Antibody detects endogenous levels of total OR2A25 protein.
Purification:	The antibody was purified from rabbit antiserum by affinity-chromatography using immunogen.
Purity:	> 95 %

Target Details

Target:	OR2A25
Alternative Name:	OR2A25 (OR2A25 Products)
Background:	Synonyms: Olfactory receptor 2A25, OR2A25, OR2A25P, OR2A27

Target Details

NCBI Gene Symbol: O2A25

Molecular Weight: 34 kDa

Gene ID: 392138

UniProt: [A4D2G3](#)

Application Details

Application Notes: WB: 1:500~1:1000 IF: 1:100~1:500 ELISA: 1:1000

Comment: Unigene-Number: Hs.553787 (NCBI Gene Symbol: O2A25)

Restrictions: For Research Use only

Handling

Format: Liquid

Concentration: 1 mg/mL

Buffer: phosphate buffered saline (without Mg²⁺ and Ca²⁺), pH 7.4, 150 mM NaCl, 0.02 % sodium azide and 50 % glycerol.

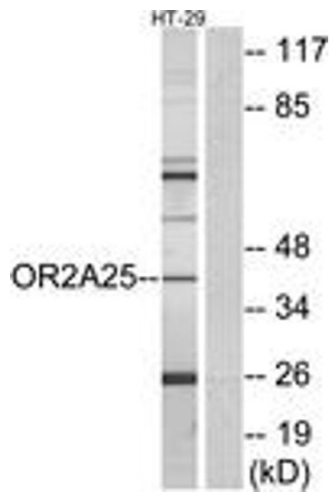
Preservative: Sodium azide

Precaution of Use: This product contains sodium azide: a POISONOUS AND HAZARDOUS SUBSTANCE which should be handled by trained staff only.

Storage: -20 °C

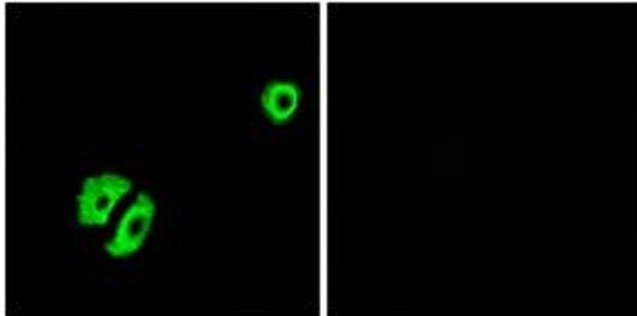
Storage Comment: Stable at -20°C for at least 1 year.

Expiry Date: 12 months



Western Blotting

Image 1. Western blot analysis of extracts from HT-29 cells, using OR2A25 Antibody. The lane on the right is treated with the synthesized peptide.



Immunofluorescence

Image 2. Immunofluorescence analysis of A549 cells, using OR2A25 Antibody. The picture on the right is treated with the synthesized peptide.