

Datasheet for ABIN1535806
anti-OR2A42 antibody (AA 241-290)[Go to Product page](#)

1 Image

Overview

Quantity:	100 µg
Target:	OR2A42
Binding Specificity:	AA 241-290
Reactivity:	Human
Host:	Rabbit
Clonality:	Polyclonal
Conjugate:	This OR2A42 antibody is un-conjugated
Application:	ELISA, Immunofluorescence (IF)

Product Details

Immunogen:	The antiserum was produced against synthesized peptide derived from human OR2A42.
Isotype:	IgG
Specificity:	OR2A42 Antibody detects endogenous levels of total OR2A42 protein.
Purification:	The antibody was purified from rabbit antiserum by affinity-chromatography using immunogen.
Purity:	> 95 %

Target Details

Target:	OR2A42
Alternative Name:	OR2A42 (OR2A42 Products)
Background:	Synonyms: Olfactory receptor 2A1/2A42, Olfactory receptor OR7-16, Olfactory receptor OR7-19,

Target Details

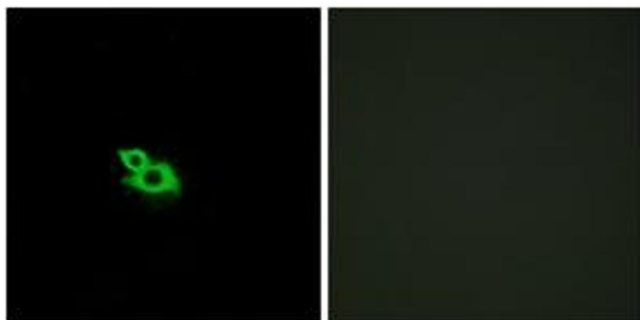
	OR2A1, OR2A42 NCBI Gene Symbol: O2A42
Molecular Weight:	34 kDa
Gene ID:	346528, 402317
UniProt:	Q8NGT9

Application Details

Application Notes:	IF: 1:100~1:500 ELISA: 1:1000
Comment:	Unigene-Number: Hs.528398, Hs.632027, (NCBI Gene Symbol: O2A42)
Restrictions:	For Research Use only

Handling

Format:	Liquid
Concentration:	1 mg/mL
Buffer:	phosphate buffered saline (without Mg ²⁺ and Ca ²⁺), pH 7.4, 150 mM NaCl, 0.02 % sodium azide and 50 % glycerol.
Preservative:	Sodium azide
Precaution of Use:	This product contains sodium azide: a POISONOUS AND HAZARDOUS SUBSTANCE which should be handled by trained staff only.
Storage:	-20 °C
Storage Comment:	Stable at -20°C for at least 1 year.
Expiry Date:	12 months



Immunofluorescence

Image 1. Immunofluorescence analysis of MCF7 cells, using OR2A42 Antibody. The picture on the right is treated with the synthesized peptide.