

Datasheet for ABIN1535810
anti-OR2AP1 antibody (AA 231-280)[Go to Product page](#)

1 Image

Overview

Quantity:	100 µg
Target:	OR2AP1
Binding Specificity:	AA 231-280
Reactivity:	Human
Host:	Rabbit
Clonality:	Polyclonal
Conjugate:	This OR2AP1 antibody is un-conjugated
Application:	ELISA, Western Blotting (WB)

Product Details

Immunogen:	The antiserum was produced against synthesized peptide derived from human OR2AP1.
Isotype:	IgG
Specificity:	OR2AP1 Antibody detects endogenous levels of total OR2AP1 protein.
Purification:	The antibody was purified from rabbit antiserum by affinity-chromatography using immunogen.
Purity:	> 95 %

Target Details

Target:	OR2AP1
Alternative Name:	OR2AP1 (OR2AP1 Products)
Background:	Synonyms: Olfactory receptor 2AP1, Olfactory receptor OR12-9, OR2AP1, OR2AP1P

Target Details

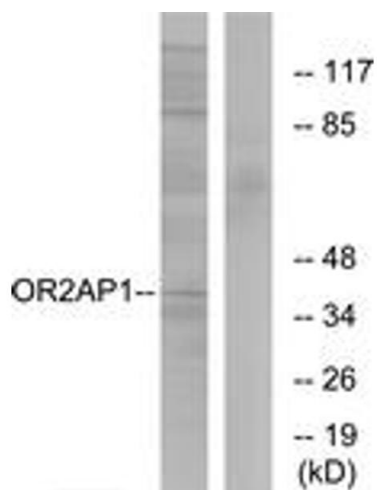
	NCBI Gene Symbol: O2AP1
Molecular Weight:	34 kDa
Gene ID:	121129
UniProt:	Q8NGE2

Application Details

Application Notes:	WB: 1:500~1:1000 ELISA: 1:1000
Comment:	Unigene-Number: Hs.690413 (NCBI Gene Symbol: O2AP1)
Restrictions:	For Research Use only

Handling

Format:	Liquid
Concentration:	1 mg/mL
Buffer:	phosphate buffered saline (without Mg2+ and Ca2+), pH 7.4, 150 mM NaCl, 0.02 % sodium azide and 50 % glycerol.
Preservative:	Sodium azide
Precaution of Use:	This product contains sodium azide: a POISONOUS AND HAZARDOUS SUBSTANCE which should be handled by trained staff only.
Storage:	-20 °C
Storage Comment:	Stable at -20°C for at least 1 year.
Expiry Date:	12 months



Western Blotting

Image 1. Western blot analysis of extracts from Jurkat cells, using OR2AP1 Antibody. The lane on the right is treated with the synthesized peptide.