



[Go to Product page](#)

Datasheet for ABIN1535812

anti-OR2T11 antibody (AA 51-100)

2 Images

Overview

Quantity:	100 µL
Target:	OR2T11
Binding Specificity:	AA 51-100
Reactivity:	Human
Host:	Rabbit
Clonality:	Polyclonal
Conjugate:	This OR2T11 antibody is un-conjugated
Application:	Western Blotting (WB), ELISA, Immunofluorescence (IF)

Product Details

Immunogen:	The antiserum was produced against synthesized peptide derived from human OR2T11.
Isotype:	IgG
Specificity:	OR2T11 Antibody detects endogenous levels of total OR2T11 protein.
Purification:	The antibody was purified from rabbit antiserum by affinity-chromatography using immunogen.
Purity:	> 95 %

Target Details

Target:	OR2T11
Alternative Name:	OR2T11 (OR2T11 Products)
Background:	Synonyms: Olfactory receptor 2T11, Olfactory receptor OR1-65, OR2T11,

Target Details

NCBI Gene Symbol: O2T11

Molecular Weight: 34 kDa

Gene ID: 127077

UniProt: [Q8NH01](#)

Application Details

Application Notes: WB: 1:500~1:1000 IF: 1:100~1:500 ELISA: 1:1000

Comment: Unigene-Number: Hs.626619 (NCBI Gene Symbol: O2T11)

Restrictions: For Research Use only

Handling

Format: Liquid

Concentration: 1 mg/mL

Buffer: phosphate buffered saline (without Mg²⁺ and Ca²⁺), pH 7.4, 150 mM NaCl, 0.02 % sodium azide and 50 % glycerol.

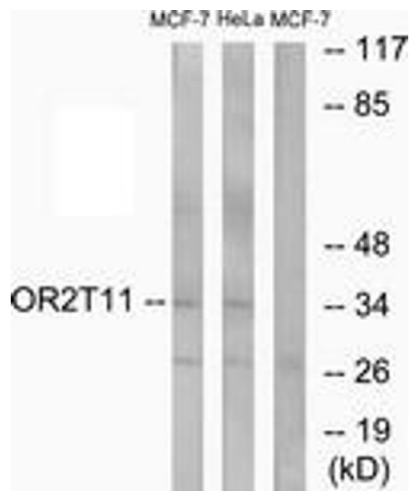
Preservative: Sodium azide

Precaution of Use: This product contains sodium azide: a POISONOUS AND HAZARDOUS SUBSTANCE which should be handled by trained staff only.

Storage: -20 °C

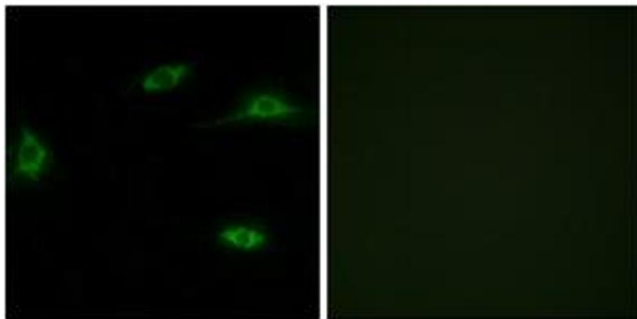
Storage Comment: Stable at -20°C for at least 1 year.

Expiry Date: 12 months



Western Blotting

Image 1. Western blot analysis of extracts from MCF-7/HeLa cells, using OR2T11 Antibody. The lane on the right is treated with the synthesized peptide.



Immunofluorescence

Image 2. Immunofluorescence analysis of LOVO cells, using OR2T11 Antibody. The picture on the right is treated with the synthesized peptide.