



Datasheet for ABIN1535813
anti-OR2T2/2T35 antibody (AA 201-250)



[Go to Product page](#)

2 Images

Overview

Quantity:	100 µg
Target:	OR2T2/2T35
Binding Specificity:	AA 201-250
Reactivity:	Human
Host:	Rabbit
Clonality:	Polyclonal
Conjugate:	This OR2T2/2T35 antibody is un-conjugated
Application:	ELISA, Western Blotting (WB), Immunofluorescence (IF)

Product Details

Immunogen:	The antiserum was produced against synthesized peptide derived from human OR2T2/2T35.
Isotype:	IgG
Specificity:	OR2T2/2T35 Antibody detects endogenous levels of total OR2T2/2T35 protein.
Purification:	The antibody was purified from rabbit antiserum by affinity-chromatography using immunogen.
Purity:	> 95 %

Target Details

Target:	OR2T2/2T35
Abstract:	OR2T2/2T35 Products
Background:	Synonyms: Olfactory receptor 2T33, Olfactory receptor OR1-56, OR2T33,

Target Details

NCBI Gene Symbol: O2T33

Molecular Weight: 36 kDa

Gene ID: 401992, 403244

UniProt: [Q6IF00](#), [Q8NGX2](#)

Application Details

Application Notes: WB: 1:500~1:1000 IF: 1:100~1:500 ELISA: 1:1000

Comment: Unigene-Number: Hs.554482, Hs.534846 (NCBI Gene Symbol: O2T33)

Restrictions: For Research Use only

Handling

Format: Liquid

Concentration: 1 mg/mL

Buffer: phosphate buffered saline (without Mg²⁺ and Ca²⁺), pH 7.4, 150 mM NaCl, 0.02 % sodium azide and 50 % glycerol.

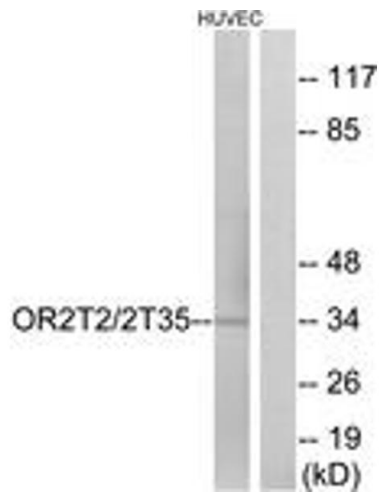
Preservative: Sodium azide

Precaution of Use: This product contains sodium azide: a POISONOUS AND HAZARDOUS SUBSTANCE which should be handled by trained staff only.

Storage: -20 °C

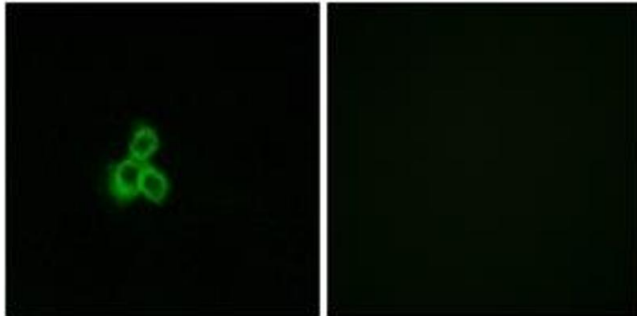
Storage Comment: Stable at -20°C for at least 1 year.

Expiry Date: 12 months



Western Blotting

Image 1. Western blot analysis of extracts from HuvEc cells, using OR2T2/2T35 Antibody. The lane on the right is treated with the synthesized peptide.



Immunofluorescence

Image 2. Immunofluorescence analysis of MCF7 cells, using OR2T2/2T35 Antibody. The picture on the right is treated with the synthesized peptide.