



Datasheet for ABIN1535815
anti-OR4F4/4F5/4F17 antibody (AA 51-100)



[Go to Product page](#)

1 Image

Overview

Quantity:	100 µg
Target:	OR4F4/4F5/4F17
Binding Specificity:	AA 51-100
Reactivity:	Human
Host:	Rabbit
Clonality:	Polyclonal
Conjugate:	This OR4F4/4F5/4F17 antibody is un-conjugated
Application:	ELISA, Western Blotting (WB)

Product Details

Immunogen:	The antiserum was produced against synthesized peptide derived from human OR4F4/4F5/4F17.
Isotype:	IgG
Specificity:	OR4F4/4F5/4F17 Antibody detects endogenous levels of total OR4F4/4F5/4F17 protein.
Purification:	The antibody was purified from rabbit antiserum by affinity-chromatography using immunogen.
Purity:	> 95 %

Target Details

Target:	OR4F4/4F5/4F17
Alternative Name:	OR4F4/4F5/4F17 (OR4F4/4F5/4F17 Products)

Target Details

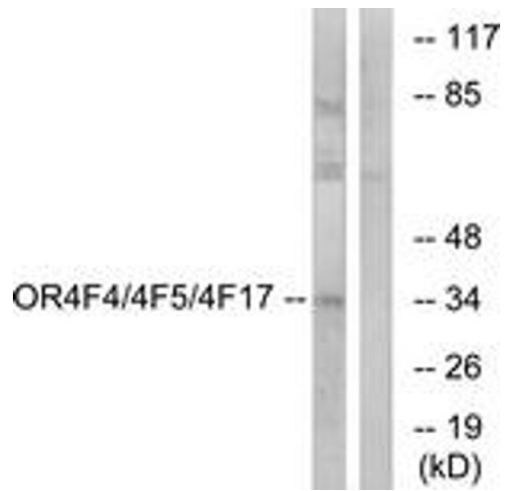
Background:	Synonyms: Olfactory receptor 4F17, OR4F17, OR4F11P, OR4F18, OR4F19 NCBI Gene Symbol: O4F17
Molecular Weight:	34 kDa
Gene ID:	81099, 26682, 79501
UniProt:	Q8NGA8 , Q96R69 , Q8NH21

Application Details

Application Notes:	WB: 1:500~1:1000 ELISA: 1:1000
Comment:	Unigene-Number: Hs.572591, Hs.554420, Hs.554500 (NCBI Gene Symbol: O4F17)
Restrictions:	For Research Use only

Handling

Format:	Liquid
Concentration:	1 mg/mL
Buffer:	phosphate buffered saline (without Mg ²⁺ and Ca ²⁺), pH 7.4, 150 mM NaCl, 0.02 % sodium azide and 50 % glycerol.
Preservative:	Sodium azide
Precaution of Use:	This product contains sodium azide: a POISONOUS AND HAZARDOUS SUBSTANCE which should be handled by trained staff only.
Storage:	-20 °C
Storage Comment:	Stable at -20°C for at least 1 year.
Expiry Date:	12 months



Western Blotting

Image 1. Western blot analysis of extracts from MCF-7 cells, using OR4F4/4F5/4F17 Antibody. The lane on the right is treated with the synthesized peptide.