



[Go to Product page](#)

Datasheet for ABIN1535827
anti-OR52E1 antibody (AA 201-250)

2 Images

Overview

Quantity:	100 µg
Target:	OR52E1
Binding Specificity:	AA 201-250
Reactivity:	Human
Host:	Rabbit
Clonality:	Polyclonal
Application:	ELISA, Western Blotting (WB), Immunofluorescence (IF)

Product Details

Immunogen:	The antiserum was produced against synthesized peptide derived from human OR52E1.
Isotype:	IgG
Specificity:	OR52E1 Antibody detects endogenous levels of total OR52E1 protein.
Purification:	The antibody was purified from rabbit antiserum by affinity-chromatography using immunogen.
Purity:	> 95 %

Target Details

Target:	OR52E1
Alternative Name:	OR52E1 (OR52E1 Products)
Background:	Synonyms: Olfactory receptor 52E1, OR52E1P, OR52E1 NCBI Gene Symbol: O52E1

Target Details

Molecular Weight: 34 kDa

Gene ID: 79296

UniProt: [Q8NGJ3](#)

Application Details

Application Notes: WB: 1:500~1:1000 IF: 1:100~1:500 ELISA: 1:1000

Comment: Unigene-Number: Hs.553734 (NCBI Gene Symbol: O52E1)

Restrictions: For Research Use only

Handling

Format: Liquid

Concentration: 1 mg/mL

Buffer: phosphate buffered saline (without Mg²⁺ and Ca²⁺), pH 7.4, 150 mM NaCl, 0.02 % sodium azide and 50 % glycerol.

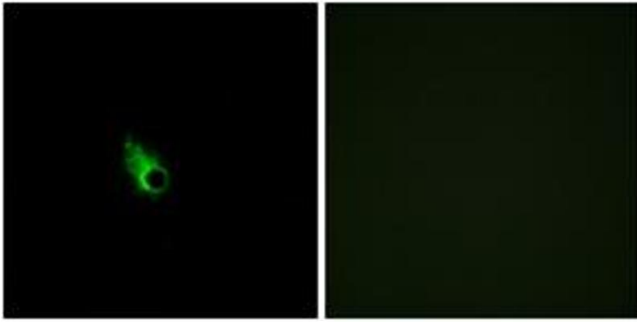
Preservative: Sodium azide

Precaution of Use: This product contains sodium azide: a POISONOUS AND HAZARDOUS SUBSTANCE which should be handled by trained staff only.

Storage: -20 °C

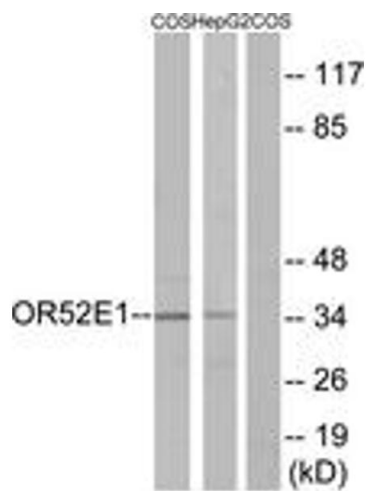
Storage Comment: Stable at -20°C for at least 1 year.

Expiry Date: 12 months



Immunofluorescence

Image 1. Immunofluorescence analysis of HeLa cells, using OR52E1 Antibody. The picture on the right is treated with the synthesized peptide.



Western Blotting

Image 2. Western blot analysis of extracts from COS7/HepG2 cells, using OR52E1 Antibody. The lane on the right is treated with the synthesized peptide.