



[Go to Product page](#)

Datasheet for ABIN1535854
anti-OR10G6 antibody (AA 261-310)

2 Images

Overview

Quantity:	100 µg
Target:	OR10G6
Binding Specificity:	AA 261-310
Reactivity:	Human
Host:	Rabbit
Clonality:	Polyclonal
Application:	ELISA, Western Blotting (WB), Immunofluorescence (IF)

Product Details

Immunogen:	The antiserum was produced against synthesized peptide derived from human OR10G6.
Isotype:	IgG
Specificity:	OR10G6 Antibody detects endogenous levels of total OR10G6 protein.
Purification:	The antibody was purified from rabbit antiserum by affinity-chromatography using immunogen.
Purity:	> 95 %

Target Details

Target:	OR10G6
Alternative Name:	OR10G6 (OR10G6 Products)
Background:	Synonyms: Olfactory receptor 10G6, Olfactory receptor OR11-280, OR10G6, OR10G6P, NCBI Gene Symbol: OR10G6

Target Details

Molecular Weight: 36 kDa

Gene ID: 79490

UniProt: [Q8NH81](#)

Application Details

Application Notes: WB: 1:500~1:1000 IF: 1:100~1:500 ELISA: 1:10000

Comment: Unigene-Number: Hs.553760 (NCBI Gene Symbol: OR10G6)

Restrictions: For Research Use only

Handling

Format: Liquid

Concentration: 1 mg/mL

Buffer: phosphate buffered saline (without Mg²⁺ and Ca²⁺), pH 7.4, 150 mM NaCl, 0.02 % sodium azide and 50 % glycerol.

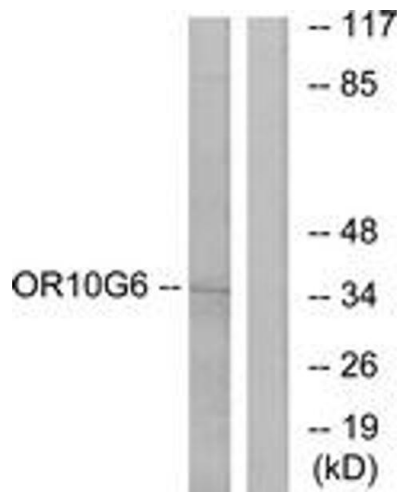
Preservative: Sodium azide

Precaution of Use: This product contains sodium azide: a POISONOUS AND HAZARDOUS SUBSTANCE which should be handled by trained staff only.

Storage: -20 °C

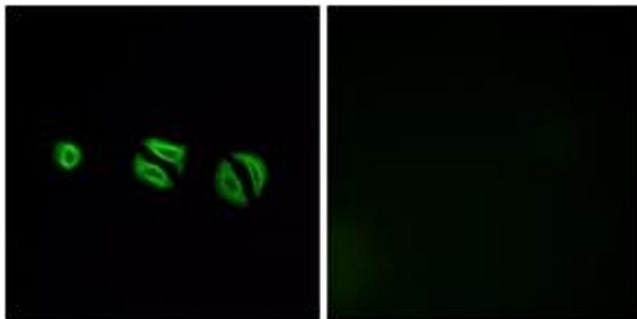
Storage Comment: Stable at -20°C for at least 1 year.

Expiry Date: 12 months



Western Blotting

Image 1. Western blot analysis of extracts from COLO cells, using OR10G6 Antibody. The lane on the right is treated with the synthesized peptide.



Immunofluorescence

Image 2. Immunofluorescence analysis of A549 cells, using OR10G6 Antibody. The picture on the right is treated with the synthesized peptide.