

Datasheet for ABIN1535862  
**anti-OR13G1 antibody (AA 241-290)**[Go to Product page](#)

## 1 Image

## Overview

Quantity:	100 µg
Target:	OR13G1
Binding Specificity:	AA 241-290
Reactivity:	Human
Host:	Rabbit
Clonality:	Polyclonal
Conjugate:	This OR13G1 antibody is un-conjugated
Application:	Western Blotting (WB), ELISA

## Product Details

Immunogen:	The antiserum was produced against synthesized peptide derived from human OR13G1.
Isotype:	IgG
Specificity:	OR13G1 Antibody detects endogenous levels of total OR13G1 protein.
Purification:	The antibody was purified from rabbit antiserum by affinity-chromatography using immunogen.
Purity:	> 95 %

## Target Details

Target:	OR13G1
Alternative Name:	OR13G1 ( <a href="#">OR13G1 Products</a> )
Background:	Synonyms: Olfactory receptor 13G1, OR13G1,

## Target Details

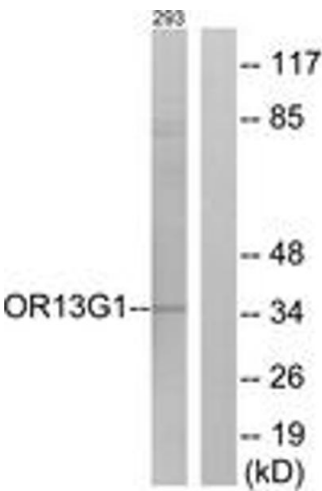
	NCBI Gene Symbol: OR13G1
Molecular Weight:	34 kDa
Gene ID:	441933
OMIM:	611677
UniProt:	<a href="#">Q8NGZ3</a>

## Application Details

Application Notes:	WB: 1:500~1:1000 ELISA: 1:20000
Comment:	Unigene-Number: Hs.553834 (NCBI Gene Symbol: OR13G1)
Restrictions:	For Research Use only

## Handling

Format:	Liquid
Concentration:	1 mg/mL
Buffer:	phosphate buffered saline (without Mg <sup>2+</sup> and Ca <sup>2+</sup> ), pH 7.4, 150 mM NaCl, 0.02 % sodium azide and 50 % glycerol.
Preservative:	Sodium azide
Precaution of Use:	This product contains sodium azide: a POISONOUS AND HAZARDOUS SUBSTANCE which should be handled by trained staff only.
Storage:	-20 °C
Storage Comment:	Stable at -20°C for at least 1 year.
Expiry Date:	12 months



Western Blotting

**Image 1.** Western blot analysis of extracts from 293 cells, using OR13G1 Antibody. The lane on the right is treated with the synthesized peptide.