



Datasheet for ABIN1535864  
**anti-OR1A1 antibody (AA 260-309)**



[Go to Product page](#)

1 Image

### Overview

Quantity:	100 µg
Target:	OR1A1
Binding Specificity:	AA 260-309
Reactivity:	Human
Host:	Rabbit
Clonality:	Polyclonal
Conjugate:	This OR1A1 antibody is un-conjugated
Application:	Western Blotting (WB), ELISA

### Product Details

Immunogen:	The antiserum was produced against synthesized peptide derived from human OR1A1.
Isotype:	IgG
Specificity:	OR1A1 Antibody detects endogenous levels of total OR1A1 protein.
Purification:	The antibody was purified from rabbit antiserum by affinity-chromatography using immunogen.
Purity:	> 95 %

### Target Details

Target:	OR1A1
Alternative Name:	OR1A1 ( <a href="#">OR1A1 Products</a> )
Background:	Synonyms: Olfactory receptor 1A1, Olfactory receptor OR17-11, Olfactory receptor 17-7, OR17-

## Target Details

---

7, OR1A1,  
NCBI Gene Symbol: OR1A1

Molecular Weight: 34 kDa

Gene ID: 8383

UniProt: [Q9P1Q5](#)

## Application Details

---

Application Notes: WB: 1:500~1:1000 ELISA: 1:20000

Comment: Unigene-Number: Hs.532688 (NCBI Gene Symbol: OR1A1)

Restrictions: For Research Use only

## Handling

---

Format: Liquid

Concentration: 1 mg/mL

Buffer: phosphate buffered saline (without Mg<sup>2+</sup> and Ca<sup>2+</sup>), pH 7.4, 150 mM NaCl, 0.02 % sodium azide and 50 % glycerol.

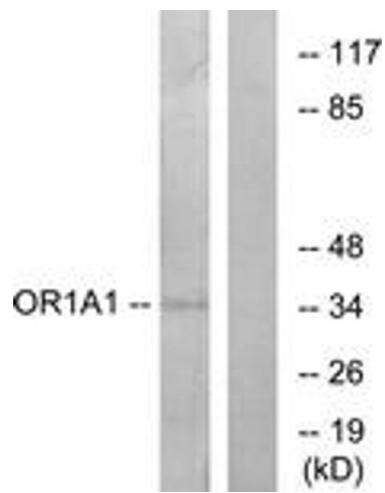
Preservative: Sodium azide

Precaution of Use: This product contains sodium azide: a POISONOUS AND HAZARDOUS SUBSTANCE which should be handled by trained staff only.

Storage: -20 °C

Storage Comment: Stable at -20°C for at least 1 year.

Expiry Date: 12 months



### Western Blotting

**Image 1.** Western blot analysis of extracts from COLO cells, using OR1A1 Antibody. The lane on the right is treated with the synthesized peptide.