

Datasheet for ABIN1535865
anti-OR1B1 antibody (AA 161-210)

2 Images

[Go to Product page](#)

Overview

Quantity:	100 µg
Target:	OR1B1
Binding Specificity:	AA 161-210
Reactivity:	Human
Host:	Rabbit
Clonality:	Polyclonal
Conjugate:	This OR1B1 antibody is un-conjugated
Application:	Western Blotting (WB), ELISA, Immunofluorescence (IF)

Product Details

Immunogen:	The antiserum was produced against synthesized peptide derived from human OR1B1.
Isotype:	IgG
Specificity:	OR1B1 Antibody detects endogenous levels of total OR1B1 protein.
Purification:	The antibody was purified from rabbit antiserum by affinity-chromatography using immunogen.
Purity:	> 95 %

Target Details

Target:	OR1B1
Alternative Name:	OR1B1 (OR1B1 Products)
Background:	Synonyms: Olfactory receptor 1B1, Olfactory receptor OR9-26, Olfactory receptor 9-B, OR9-B,

Target Details

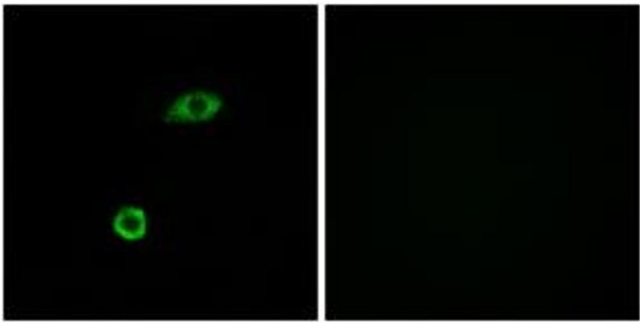
	OR1B1 NCBI Gene Symbol: OR1B1
Molecular Weight:	35 kDa
Gene ID:	347169
UniProt:	Q8NGR6

Application Details

Application Notes:	WB: 1:500~1:1000 IF: 1:100~1:500 ELISA: 1:20000
Comment:	Unigene-Number: Hs.553710 (NCBI Gene Symbol: OR1B1)
Restrictions:	For Research Use only

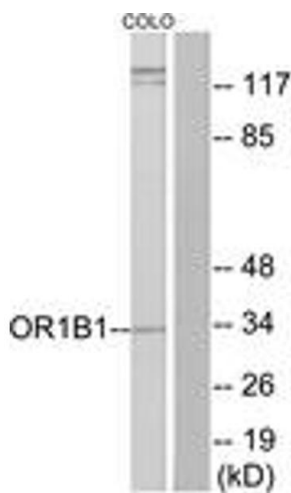
Handling

Format:	Liquid
Concentration:	1 mg/mL
Buffer:	phosphate buffered saline (without Mg ²⁺ and Ca ²⁺), pH 7.4, 150 mM NaCl, 0.02 % sodium azide and 50 % glycerol.
Preservative:	Sodium azide
Precaution of Use:	This product contains sodium azide: a POISONOUS AND HAZARDOUS SUBSTANCE which should be handled by trained staff only.
Storage:	-20 °C
Storage Comment:	Stable at -20°C for at least 1 year.
Expiry Date:	12 months



Immunofluorescence

Image 1. Immunofluorescence analysis of A549 cells, using OR1B1 Antibody. The picture on the right is treated with the synthesized peptide.



Western Blotting

Image 2. Western blot analysis of extracts from COLO cells, using OR1B1 Antibody. The lane on the right is treated with the synthesized peptide.