

Datasheet for ABIN1535867  
**anti-OR1L6 antibody (AA 111-160)**

## 2 Images

[Go to Product page](#)

## Overview

Quantity:	100 µg
Target:	OR1L6
Binding Specificity:	AA 111-160
Reactivity:	Human
Host:	Rabbit
Clonality:	Polyclonal
Conjugate:	This OR1L6 antibody is un-conjugated
Application:	ELISA, Western Blotting (WB), Immunofluorescence (IF)

## Product Details

Immunogen:	The antiserum was produced against synthesized peptide derived from human OR1L6.
Isotype:	IgG
Specificity:	OR1L6 Antibody detects endogenous levels of total OR1L6 protein.
Purification:	The antibody was purified from rabbit antiserum by affinity-chromatography using immunogen.
Purity:	> 95 %

## Target Details

Target:	OR1L6
Alternative Name:	OR1L6 ( <a href="#">OR1L6 Products</a> )
Background:	Synonyms: Olfactory receptor 1L6, OR1L6, OR1L7

## Target Details

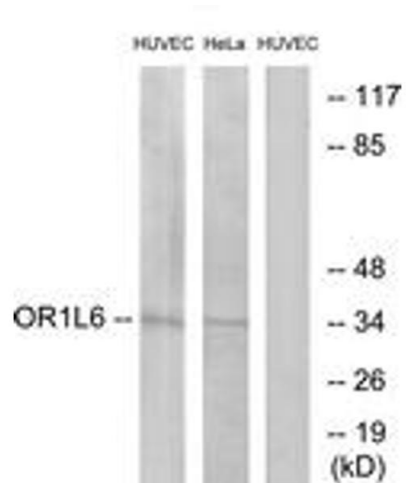
	NCBI Gene Symbol: OR1L6
Molecular Weight:	35 kDa
Gene ID:	392390
UniProt:	<a href="#">Q8NGR2</a>

## Application Details

Application Notes:	WB: 1:500~1:1000 IF: 1:100~1:500 ELISA: 1:20000
Comment:	Unigene-Number: Hs.553790 (NCBI Gene Symbol: OR1L6)
Restrictions:	For Research Use only

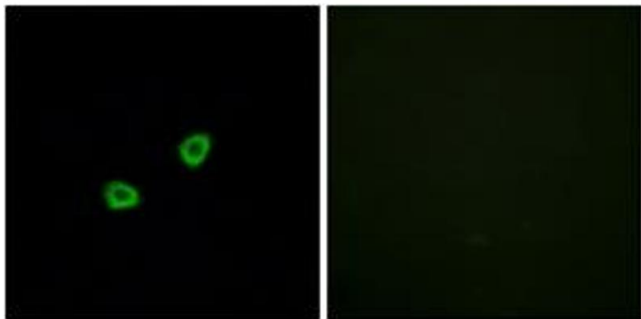
## Handling

Format:	Liquid
Concentration:	1 mg/mL
Buffer:	phosphate buffered saline (without Mg2+ and Ca2+), pH 7.4, 150 mM NaCl, 0.02 % sodium azide and 50 % glycerol.
Preservative:	Sodium azide
Precaution of Use:	This product contains sodium azide: a POISONOUS AND HAZARDOUS SUBSTANCE which should be handled by trained staff only.
Storage:	-20 °C
Storage Comment:	Stable at -20°C for at least 1 year.
Expiry Date:	12 months



### Western Blotting

**Image 1.** Western blot analysis of extracts from HuvEc/HeLa cells, using OR1L6 Antibody. The lane on the right is treated with the synthesized peptide.



### Immunofluorescence

**Image 2.** Immunofluorescence analysis of HuvEc cells, using OR1L6 Antibody. The picture on the right is treated with the synthesized peptide.