

Datasheet for ABIN1535868
anti-OR1N1 antibody (AA 231-280)[Go to Product page](#)

1 Image

Overview

Quantity:	100 µg
Target:	OR1N1
Binding Specificity:	AA 231-280
Reactivity:	Human
Host:	Rabbit
Clonality:	Polyclonal
Conjugate:	This OR1N1 antibody is un-conjugated
Application:	ELISA, Immunofluorescence (IF)

Product Details

Immunogen:	The antiserum was produced against synthesized peptide derived from human OR1N1.
Isotype:	IgG
Specificity:	OR1N1 Antibody detects endogenous levels of total OR1N1 protein.
Purification:	The antibody was purified from rabbit antiserum by affinity-chromatography using immunogen.
Purity:	> 95 %

Target Details

Target:	OR1N1
Alternative Name:	OR1N1 (OR1N1 Products)
Background:	Synonyms: Olfactory receptor 1N1, Olfactory receptor 1-26, OR1-26, Olfactory receptor 1N3,

Target Details

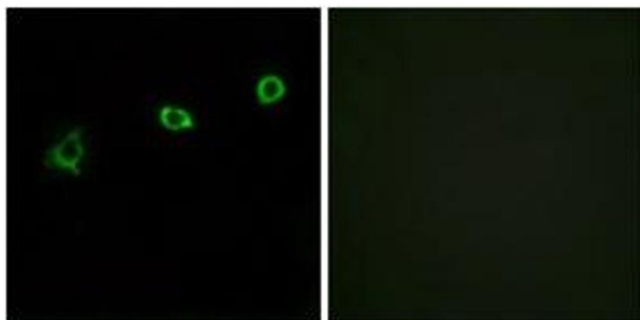
	Olfactory receptor OR9-22, OR1N1, OR1N3 NCBI Gene Symbol: OR1N1
Molecular Weight:	34 kDa
Gene ID:	138883
UniProt:	Q8NGS0

Application Details

Application Notes:	IF: 1:100~1:500 ELISA: 1:10000
Comment:	Unigene-Number: Hs.553604 (NCBI Gene Symbol: OR1N1)
Restrictions:	For Research Use only

Handling

Format:	Liquid
Concentration:	1 mg/mL
Buffer:	phosphate buffered saline (without Mg ²⁺ and Ca ²⁺), pH 7.4, 150 mM NaCl, 0.02 % sodium azide and 50 % glycerol.
Preservative:	Sodium azide
Precaution of Use:	This product contains sodium azide: a POISONOUS AND HAZARDOUS SUBSTANCE which should be handled by trained staff only.
Storage:	-20 °C
Storage Comment:	Stable at -20°C for at least 1 year.
Expiry Date:	12 months



Immunofluorescence

Image 1. Immunofluorescence analysis of HuvEc cells, using OR1N1 Antibody. The picture on the right is treated with the synthesized peptide.