

Datasheet for ABIN1535869

anti-OR1S1/1S2 antibody (AA 241-290)[Go to Product page](#)**1** Image

Overview

Quantity:	100 µg
Target:	OR1S1/1S2 (OR1S1/OR1S2)
Binding Specificity:	AA 241-290
Reactivity:	Human
Host:	Rabbit
Clonality:	Polyclonal
Conjugate:	This OR1S1/1S2 antibody is un-conjugated
Application:	ELISA, Western Blotting (WB)

Product Details

Immunogen:	The antiserum was produced against synthesized peptide derived from human OR1S1/1S2.
Isotype:	IgG
Specificity:	OR1S1/1S2 Antibody detects endogenous levels of total OR1S1/1S2 protein.
Purification:	The antibody was purified from rabbit antiserum by affinity-chromatography using immunogen.
Purity:	> 95 %

Target Details

Target:	OR1S1/1S2 (OR1S1/OR1S2)
Alternative Name:	OR1S1/1S2 (OR1S1/OR1S2 Products)
Background:	Synonyms: Olfactory receptor 1S2, OR1S2

Target Details

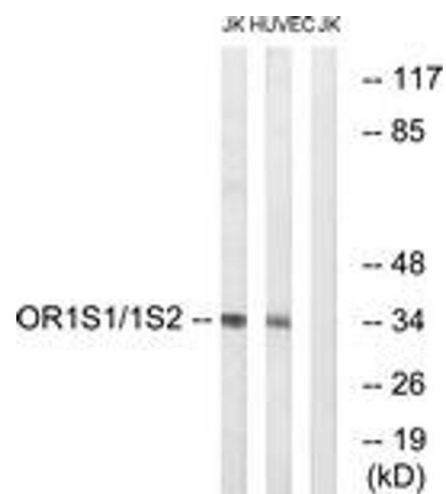
	NCBI Gene Symbol: OR1S2
Molecular Weight:	35 kDa
Gene ID:	219958, 219959
UniProt:	Q8NGQ3 , Q8NH92

Application Details

Application Notes:	WB: 1:500~1:1000 ELISA: 1:20000
Comment:	Unigene-Number: Hs.553644, Hs.553645 (NCBI Gene Symbol: OR1S2)
Restrictions:	For Research Use only

Handling

Format:	Liquid
Concentration:	1 mg/mL
Buffer:	phosphate buffered saline (without Mg ²⁺ and Ca ²⁺), pH 7.4, 150 mM NaCl, 0.02 % sodium azide and 50 % glycerol.
Preservative:	Sodium azide
Precaution of Use:	This product contains sodium azide: a POISONOUS AND HAZARDOUS SUBSTANCE which should be handled by trained staff only.
Storage:	-20 °C
Storage Comment:	Stable at -20°C for at least 1 year.
Expiry Date:	12 months



Western Blotting

Image 1. Western blot analysis of extracts from Jurkat/HuvEc cells, using OR1S1/1S2 Antibody. The lane on the right is treated with the synthesized peptide.