

Datasheet for ABIN1535871
**anti-Olfactory Receptor, Family 2, Subfamily AE, Member 1
(OR2AE1) (AA 231-280) antibody**

[Go to Product page](#)

1 Image

Overview

Quantity:	100 µg
Target:	Olfactory Receptor, Family 2, Subfamily AE, Member 1 (OR2AE1)
Binding Specificity:	AA 231-280
Reactivity:	Human
Host:	Rabbit
Clonality:	Polyclonal
Conjugate:	Un-conjugated
Application:	ELISA, Immunofluorescence (IF)

Product Details

Immunogen:	The antiserum was produced against synthesized peptide derived from human OR2AE1.
Isotype:	IgG
Specificity:	OR2AE1 Antibody detects endogenous levels of total OR2AE1 protein.
Purification:	The antibody was purified from rabbit antiserum by affinity-chromatography using immunogen.
Purity:	> 95 %

Target Details

Target:	Olfactory Receptor, Family 2, Subfamily AE, Member 1 (OR2AE1)
Alternative Name:	OR2AE1 (OR2AE1 Products)
Background:	Synonyms: Olfactory receptor 2AE1, OR2AE1, OR2AE2,

Target Details

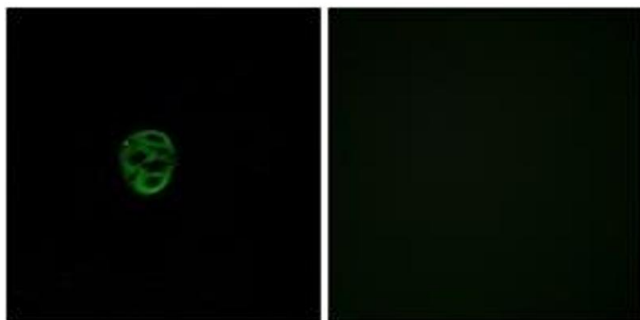
	NCBI Gene Symbol: OR2AE1
Molecular Weight:	36 kDa
Gene ID:	81392
UniProt:	Q8NHA4

Application Details

Application Notes:	IF: 1:100~1:500 ELISA: 1:10000
Comment:	Unigene-Number: Hs.647523 (NCBI Gene Symbol: OR2AE1)
Restrictions:	For Research Use only

Handling

Format:	Liquid
Concentration:	1 mg/mL
Buffer:	phosphate buffered saline (without Mg2+ and Ca2+), pH 7.4, 150 mM NaCl, 0.02 % sodium azide and 50 % glycerol.
Preservative:	Sodium azide
Precaution of Use:	This product contains sodium azide: a POISONOUS AND HAZARDOUS SUBSTANCE which should be handled by trained staff only.
Storage:	-20 °C
Storage Comment:	Stable at -20°C for at least 1 year.
Expiry Date:	12 months



Immunofluorescence

Image 1. Immunofluorescence analysis of A549 cells, using OR2AE1 Antibody. The picture on the right is treated with the synthesized peptide.